

IMPORTANT SAFETY INSTRUCTIONS

1. Read these instructions.
2. Keep these instructions.
3. Heed all warnings.
4. Follow all instructions.
5. Do not use this apparatus near water.
6. Clean only with a dry cloth.
7. Do not block any ventilation openings. Install in accordance with manufacturer's instructions.
8. Do not install near any heat sources such as radiators, registers, stoves, or other apparatus (including amplifiers) that produce heat.
9. Do not defeat the safety purpose of the polarized or grounding type plug. A polarized plug has two blades with one wider than the other. A grounding-type plug has two blades and a third grounding prong. The wide blade or third prong is provided for your safety. If the provided plug does not fit into your outlet, consult an electrician for replacement of the obsolete outlet.
10. Protect the power cord and plug from being walked on or pinched particularly at plugs, convenience receptacles, and the point where it exits from the apparatus.
11. Only use attachments & accessories specified by Rane.
12. Use only with the cart, stand, tripod, bracket, or table specified by the manufacturer, or sold with the apparatus. When a cart is used, use caution when moving the cart/apparatus combination to avoid injury from tip-over.
13. Unplug this apparatus during lightning storms or when unused for long periods of time.
14. Refer all servicing to qualified service personnel. Servicing is required when the apparatus has been damaged in any way, such as power supply cord or plug is damaged, liquid has been spilled or objects have fallen into the apparatus, the apparatus has been exposed to rain or moisture, does not operate normally, or has been dropped.
15. The plug on the power cord is the AC mains disconnect device and must remain readily operable.
16. This apparatus shall be connected to a mains socket outlet with a protective earthing connection.
17. When permanently connected, an all-pole mains switch with a contact separation of at least 3 mm in each pole shall be incorporated in the electrical installation of the building.
18. If rack-mounting, provide adequate ventilation. Equipment may be located above or below this apparatus, but some equipment (like large power amplifiers) may cause an unacceptable amount of hum or may generate too much heat and degrade the performance of this apparatus.
19. This apparatus may be installed in an industry standard equipment rack. Use screws through all mounting holes to provide the best support.

WARNING: To reduce the risk of fire or electric shock, do not expose this apparatus to rain or moisture. Apparatus shall not be exposed to dripping or splashing and no objects filled with liquids, such as vases, shall be placed on the apparatus.

INTRODUCTION

Beyond the Quick Start guide, please read through this manual to get the most from your MP 4 and the included Scratch Live software. Keep this manual in a safe place. If you lose yours, a new copy may be downloaded at www.rane.com/mp4.html.

To keep up with the latest tips, and to check for software updates for your MP 4, visit the official Scratch Live Forum at scratchlive.net.

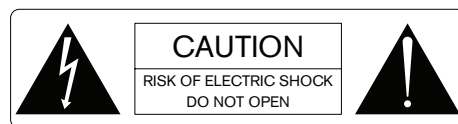
COPYRIGHT NOTICES

© 2009 Rane Corporation. All rights reserved. Scratch Live and the Scratch Live logo are trademarks of Serato Audio Research. Trademarked in the U.S. and other countries. Licensed exclusively to Rane Corporation. This software is based in part on the work of the Independent JPEG Group, and uses libpng code, copyright © 2000-2002 Glenn Randers-Pehrson. The Scratch Live Control Tone, the audio pressed on Scratch Live Control Vinyl and Control CDs, is copyright ©2004-2009 Serato Audio Research. The Control Vinyl and Control CDs are licensed for personal use only. The creation of personal backups of the Control CD is allowed, however duplicating Control CDs for commercial benefit is strictly prohibited. For avoidance of doubt the duplication or creation of Control Vinyl for any use is strictly prohibited. Please respect our copyright. ©2004-2009 Serato Audio Research. Windows XP and Vista is either a registered trademark or a trademark of Microsoft Corporation in the United States and/or other countries. Apple, Mac, Macintosh and iTunes are trademarks of Apple Computer, Inc., registered in the US and/or other countries.

WARNING

To reduce the risk of electrical shock, do not open the unit. No user serviceable parts inside. Refer servicing to qualified service personnel.

The symbols shown below are internationally accepted symbols that warn of potential hazards with electrical products.



This symbol indicates that a dangerous voltage constituting a risk of electric shock is present within this unit.



This symbol indicates that there are important operating and maintenance instructions in the literature accompanying this unit.

MINIMUM SYSTEM REQUIREMENTS

- Computer with USB 1 port supporting Full Speed Mode (USB 1.1).
- Hard drive space for storing music.

PC

- Windows XP with Service Pack 2 or higher, or Vista with Service Pack 1 or higher. We recommend XP over Vista.
- Intel processor, Pentium 4 / 1.5 GHz.
- 1 GB RAM.
- Screen resolution 1024 x 768 or higher.
- Hard drive space for storing music.

MAC

- Mac OSX 10.3 or higher.
- G4 / 1 GHz.
- 1 GB RAM.
- Screen resolution 1024 x 768 or higher.
- Hard drive space for storing music.

Scratch Live is compatible with Intel-based Mac computers.

CHECK LIST

These items are included in the box:

- Rane MP 4 Mixer.
- Scratch Live software install disc.
- 1 USB cable.
- IEC C5 line cord.
- Package of 4 rubber feet.
- Quick Start Guide.
- This manual.

CONTENTS

Important Safety Instructions	3	MAIN SCREEN OVERVIEW	13
Copyright Notices	3	Virtual Deck	13
Minimum System Requirements	3	Visual Aids	13
PC	3	Tempo Matching Display	13
Mac	3	Track Overview Display	13
		Main Waveform Display	13
MP 4 OVERVIEW	6	Beat Matching Display	13
Inputs	6	Master Gain	14
Outputs	6	Tap Tempo	14
Recording	6	Key Lock	14
Cueing	6	Repeat	14
		Censor	14
FRONT PANEL DESCRIPTION	7	Eject	14
		Fader Start	14
REAR PANEL DESCRIPTION	8	Autoplay	14
		Input Reverse	14
SCRATCH LIVE: GETTING STARTED	9	Track Gain	14
Mac OS X	9	USB Dropout Indicator	14
Windows XP	9		
Windows Vista	10	MIXING WITH THE MP 4	15
Additional Windows Drivers	10	Pitch Slider	15
Windows Troubleshooting	10	Temporary Cue	15
Third-Party Software	10	Speed Range	15
Using the Tool Tips	10	More Controls	15
IMPORTING AND PLAYING MUSIC	11	CUE POINTS	16
Importing Your Music	11	Setting Cue Points	16
Supported File Types	11	Enable Hot Cues	16
Playing Music	11	Triggering Cue Points	16
Track Display	11	Editing Cue Points	16
		Customizing Cue Points	16
WHITELABEL.NET	11		
		LOOPING	16
PREPARING YOUR FILES	12	Auto Looping	17
Analyzing Files	12	The A - Slot	17
How to Analyze Files	12	Loop Roll	17
About Corrupt Files	12	Loop Roll with MIDI	17
Set Auto-BPM	12		
The Offline Player	12		
FILE MANAGEMENT	12		
Rescan ID3 Tags	12		
Relocate Lost Files	12		

SP-6 SAMPLE PLAYER	18	RECORDING	23	FADER CLEANING	28
Loading the SP-6	18				
Playing Samples	18	LIVEFEED	24	TROUBLESHOOTING AND	
SP-6 Instant Doubles	18			FREQUENTLY ASKED QUESTIONS	28
SP-6 Play Modes	18	KEYBOARD SHORTCUTS	25		
SP-6 Pitch Controls	19			CORRUPT FILE DESCRIPTIONS	
SP-6 'Play from' Selector	19	ADDITIONAL SETUP	26	AND DIAGNOSES	29
SP-6 Track Overviews	19	Playback	26		
SP-6 Slot Volumes	19	Track End Warning	26	DECLARATION OF CONFORMITY	30
SP-6 Output	19	Playback Keys Use Shift	26		
Individual Output Selectors	19	Lock Playing Deck	26	FACTORY AUTHORIZED SERVICE	31
SP-6 Sample Bank	19	Sort Cues Chronologically	26		
SP-6 MIDI	19	Enable Hot Cues	26	LIMITED WARRANTY	31
		Use Auto Gain	26		
MIDI CONTROL	20	Hi-Fi Resampler	26		
Overview	20	Play From Start	26		
MIDI Controller Setup	20	Instant Doubles	26		
Assigning Controls	20	Play From First Cue Point	26		
MIDI Platters	20	Braking	27		
Assigning MIDI to Other Controls	20	Audio Output	27		
Assigning Ctrl-Click Functionality	20	Library	27		
Presets	20	Read iTunes™ Library	27		
Native Controller support	20	Protect Library	27		
Technical Information	20	Custom Crate Columns	27		
		Center on Selected Song	27		
ORGANIZING YOUR MUSIC	21	Show All File Types	27		
Grouping Tracks into Crates	21	Include Subcrate Tracks	27		
Subcrates	21	AutoFill Overviews	27		
Sorting Your Files	21	Import AAC Files	27		
Using the Song Browser	21	Display	27		
Searching	21	Maximum Screen Updates	27		
Prepare Window	21	Audio Cache	27		
History	22	Horizontal Waveforms	27		
Editing ID3 tags	22	Show Album Art On Deck	27		
Library Zoom	22				
Display Album Art	23				
Status Icons	23				
More Info on Corrupt Files	23				
Scratch Live Backup	23				
Deleting Crates and Tracks	23				

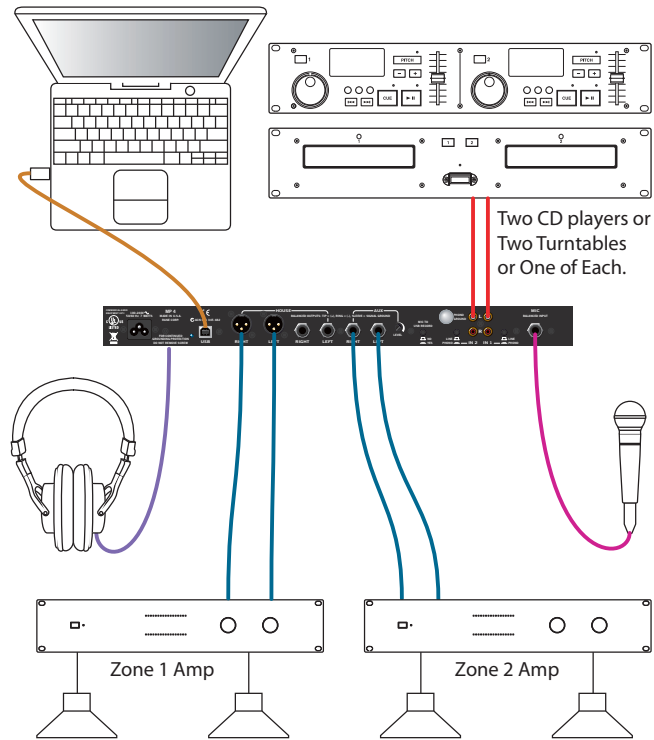
MP 4 OVERVIEW

The MP 4 combines Rane mixer technology and Serato Scratch Live software. The result is a mixer with the flexibility of playing digital music directly from your computer while still supporting traditional analog inputs. This two-bus mixer is able to simultaneously play stereo analog sources, play stereo digital files, and digitally record Mic, Program A, Program B or Main-mix. You can also operate the MP 4 as a stand-alone analog mixer without a computer, or use it as a high-quality six-channel sound card with Serato Scratch Live software, without analog sources.

The MP 4 is targeted at mobile DJ, night club, remix project studio and post production applications. The Scratch Live MP 4 control screen includes many advanced features that enhance its ability to mix and blend:

- Play / pause control, both forward and reverse.
- Pitch and bend controls for fine tuning beat matching.
- Fast forward and reverse.
- Multiple cue points per track.
- Censor (reverse sections without losing play position).
- Fader Start; Scrub track with mouse; Autoplay Crate.

The MP 4 is not a performance scratch mixer. It does not use control vinyl or CDs and does not have a scratch fader. However, it can perform scratch effects when used with an external MIDI USB controller.



While the MP 4 may be used as a generic sound card with other software applications, for best performance and support we highly recommend using Scratch Live. Performance using other applications may vary and compatibility is not guaranteed.

The computer sees the MP 4 as three USB audio devices (two stereo play and one stereo record). ASIO (for PC) and CoreAudio (for Mac) drivers are included. The digital audio format is 24-bit, 3-byte PCM with a 48 kHz sample rate.

INPUTS

PROGRAM A and B INPUT switches select between the two LINE and two USB Inputs. LINE 1 and LINE 2 are set for PHONO level or LINE level using the associated push switch on the rear panel.

PROGRAM A and B each feature LOW and HIGH tone and LEVEL controls. Four-segment program level meters indicate signals from -24 dBu to +12 dBu. Clipping occurs at +22 dBu.

The balanced MIC input features a full-range LEVEL control and is mixed with the Main-mix post-crossfader.

OUTPUTS

Two stereo analog outputs are provided. The HOUSE output is available on both balanced XLR and balanced ¼" TRS connectors. The AUX output is available on balanced ¼" TRS connectors and has an independent rear panel LEVEL control.

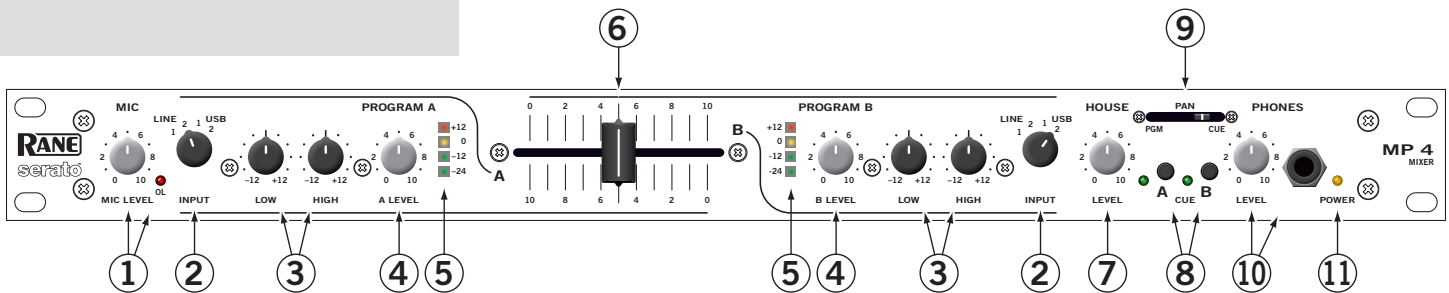
RECORDING

One USB stereo output is available for recording. Scratch Live software allows selecting Mic, Program A, Program B or Main-mix as the source. The MIC TO USB RECORD switch located on the rear panel determines if the Mic is included in the USB Main-mix record output. The ability to record lets you archive your analog sources, record samples to use in your performance or to record your performance.

CUEING

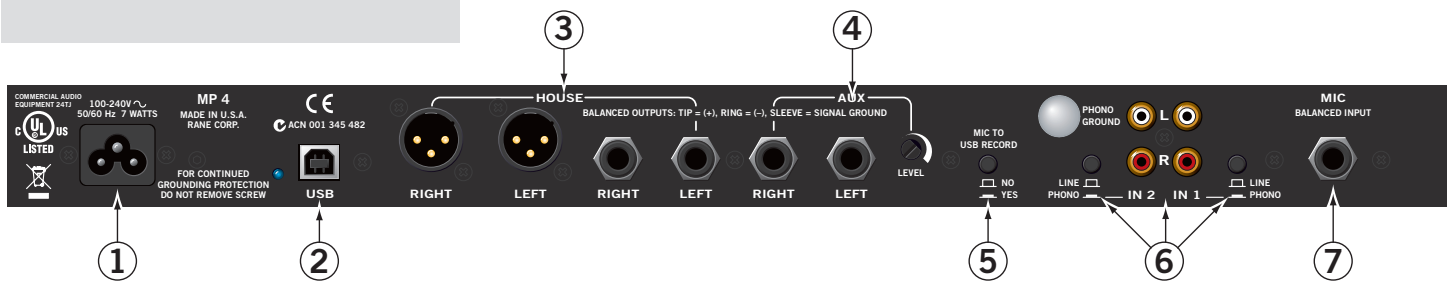
Headphone Cueing allows independent selection of the Program A or Program B input, making it possible to Cue any source (digital or analog) with the push of a switch. The PAN PGM / CUE control lets you Pan between the selected Cue input (pre-Crossfader) and the Main-mix (post-Crossfader).

FRONT PANEL DESCRIPTION



FEATURE	DESCRIPTION
① Mic Level Control	Adjusts the Level of the MIC Input. The OL (overload) indicator lights when the maximum mic level has been reached, 3 dB before clipping. If this lights up, either turn the MIC LEVEL down, or stop yelling.
② Program Input Selectors	Provide selection of LINE 1, LINE 2, USB 1 or USB 2 Inputs for each of the PROGRAM A or PROGRAM B channels. LINE Inputs may each be set for PHONO or LINE level via the rear panel switch (see Rear Panel 6).
③ Program Low And High Tones	Adjust the equalization for each of the PROGRAM channels. Pointing these controls straight up at their center detents takes the tone controls out of the signal path. This is not designed to be the only equalizer in the system, this is intended to provide EQ between varying program materials. We recommend an external graphic equalizer for the best system sound, connected between the HOUSE OUTPUTS and the amplifier.
④ Program Level Controls	Set the volume of each PROGRAM INPUT, as you would expect! These controls are pre-Crossfader, so both Program Level controls also depend on the Crossfader setting (see 6).
⑤ Program Meter	This four-segment meter shows signal presence (at -24 dBu), optimum signal level (at around 0 dBu), and a warning to turn down the associated LEVEL control if the +12 dBu indicator lights up.
⑥ Active Crossfader	Controls the mix of PROGRAM A and B LEVELS in a logical manner. When the Crossfader is all the way left, only PROGRAM A is heard. When it's all the way right, only PROGRAM B is heard. When it's in the middle, both PROGRAM A and B are mixed together equally. This is an Active Crossfader™ which uses a VCA to deliver an extended life with reduced travel noise, but to insure trouble-free operation, see Fader Cleaning on page 4.
⑦ House Level Meter	Adjusts the Output Level of the Main-mix to the HOUSE Outputs.
⑧ Cue Switches	Select Program A or B in any combination to the PHONES. The associated yellow indicator lights when a CUE is activated and pressed in. Depressing a button sends Program signals to the CUE side of the PAN control. For example, when the Crossfader is to the left (playing Program A to the House), listen to CUE B (Program B) on the headphones to audition, match beats or prepare a starting point.
⑨ Pan Control	Changes the relative levels of the Cue and Program mixed together in stereo to the PHONES. Adjust this control anywhere between Program and Cue: PGM follows the Main-mix (House) Output. CUE is determined by the CUE switches and only goes to the headphones.
⑩ Phones Level And Head- phone Jack	As you guessed, plug your headphones in here and adjust the overall volume with the LEVEL control. CUE 8 and PAN 9 select the source.
⑪ Power Indicator	Illuminates to let you know the MP 4 is plugged in and ready to go.

REAR PANEL DESCRIPTION



FEATURE	DESCRIPTION
① Universal Voltage Input	Via a miniature IEC 60320 C6 appliance inlet. This mates with an IEC 60320 C5 line cord (USA domestic). Do not lift the ground connection!
② USB Connection	Attach the included USB cable from here to the computer. The blue LED illuminates when the cable is connected and receiving power. USB delivers two stereo inputs from the computer to the mixer (USB 1 and USB 2), and one stereo record signal from the mixer to the computer.
③ House Output	The front panel HOUSE LEVEL control affects the volume at this Output. Connect either the XLR or ¼" TRS (tip-ring-sleeve) jacks to a balanced equalizer or amplifier. Both Output types may be used simultaneously if needed. Though not recommended, unbalanced ¼" TS (tip-sleeve) cables may be used for short runs (under 3 meters [10 feet]) to an amplifier with unbalanced inputs. See the RaneNote "Sound System Interconnection" for wiring recommendations.
④ AUX Output	This delivers the same signal as the HOUSE Output, but has its own rear panel LEVEL control. This Output is not affected by the front panel HOUSE LEVEL control. These balanced ¼" TRS (tip-ring-sleeve) Outputs connect to a balanced equalizer or amplifier (for a possible second listening zone) and follow the same interconnection rules as above.
⑤ Mic to USB Record Switch	In the YES position the Mic signal along with the Program mix is routed to the USB record output. In the NO position only the Program mix is sent to the USB record output.
⑥ Inputs 1 & 2	These stereo Inputs are each switchable from a PHONO (RIAA) stage for magnetic cartridges (switch in) to a LINE level Input suitable for any line level device such as a CD player (switch out). Each of these may be assigned to PROGRAM A or B using the front panel INPUT selectors. The PHONO GROUND screw connects those extra wires coming out of the turntables.
⑦ Mic Input Jack	Accepts either a ¼" balanced (TRS) or unbalanced (TS) microphone plug, controlled by the front panel MIC LEVEL control.

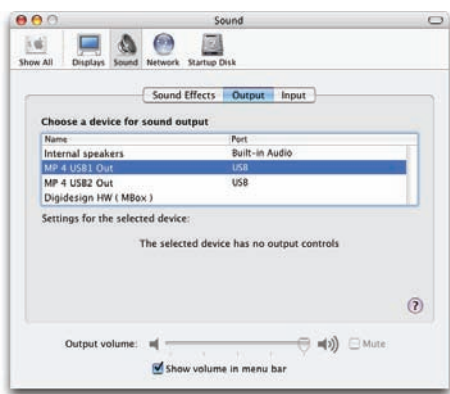
SCRATCH LIVE: GETTING STARTED

MAC OS X

Before you install the Scratch Live software, check for free software updates at scratchlive.net. The software version that came with your MP 4 is printed on the installation CD. The Scratch Live software is updated frequently, all updates are free, and available at scratchlive.net.

To install the software, double-click on the installer icon from the CD-ROM, or the installer you just downloaded from scratchlive.net.

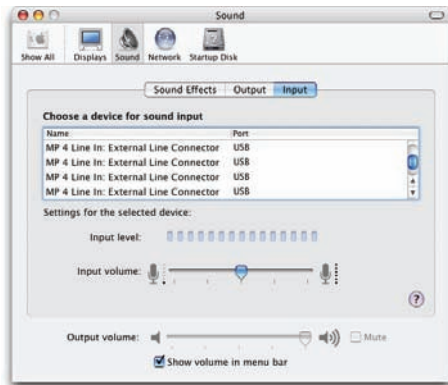
When you connect your MP 4 to your Mac, it will appear to the Mac operating system as multiple sound outputs and inputs. Go to the audio section of the system preferences panel to select the desired settings.



On the output tab, choose MP 4 USB 1 Out or MP 4 USB 2 Out, and on the MP 4 select the same USB 1 or 2 INPUT.

On the input tab, you will see four MP 4 devices listed.

They are, in order:



1. The Main-mix output
2. Program A
3. Program B
4. Microphone

The MP 4 can be used with third party software, as well as the Scratch Live software included with it. On the Mac, you can use the MP 4 with any audio application, though technical support is limited to Scratch Live.

WINDOWS XP

1. Disconnect any unnecessary USB devices from your PC.
2. Connect the MP 4 to your computer with the supplied USB cable.

3. The Found New Hardware bubbles appear:

- MP 4**
- USB Composite Device**
- MP 4 USB1 Out**
- USB Audio Device**
- MP 4 USB2 Out**
- USB Audio Device**
- MP 4 Line In**
- USB Audio Device**
- MP 4**
- USB Human Interface Device**

Your new hardware is installed and ready to use.

4. Before you install the Scratch Live software, check for free software updates at scratchlive.net. The software version that came with your MP 4 is printed on the installation CD. The Scratch Live software is updated frequently, and all updates are free. To install the software, double-click on the installer icon from the CD-ROM, or the installer you just downloaded from scratchlive.net. Follow the on-screen instructions.

5. Click “Next” to continue the install, or choose custom if you wish to change the install directory or choose not to install the ASIO driver.

6. Windows may complain that the software driver is not digitally signed. Defy Microsoft and choose Continue Anyway.



7. Click Finish once installation is complete. Scratch Live appears in the Start Menu under All Programs > Serato > Scratch Live.

As soon as you install the device driver, the operating system does not see the MP 4. That means you can either [A] not install anything, and Windows will see the MP 4, or [B] install Scratch Live and the ASIO driver, and then you can use the MP 4 with Scratch Live or an ASIO application only.

WINDOWS VISTA

When you plug in your hardware:

1. A Found New Hardware wizard will pop up.
2. Choose “Locate and install driver software”.
3. After Windows looks for the driver it will say “Windows couldn’t find driver software for your device”. Choose “Browse my computer for driver software”.
4. Browse to the location that you extracted the ScratchLive .zip file to. Choose the Drivers folder.
5. Click next and Windows will say “Windows can’t verify the publisher of this driver software”. Click “Install this driver software anyway”.
6. When you see the bubble “Your new hardware is installed and ready to use,” proceed to install the Scratch Live driver.

ADDITIONAL WINDOWS DRIVERS

Windows treats each USB port individually. You might like to install the Drivers for the MP 4 hardware on all of your USB ports.

Connect your Scratch Live hardware to a USB port. Windows will again attempt to install the drivers via the hardware wizard. Cancel and close the hardware wizard.

With your hardware still connected, run the Scratch Live driver updater. This is usually located in:

C: > Program Files > Serato > driver_updater32.exe
or for 64-bit systems:

C: > Program Files (x86) > Serato > driver_updater64.exe.

Repeat this process for each of your USB ports.

TIP: The driver updater can install drivers for different types of Scratch Live hardware, not just the MP 4. For example, if you play at a club that uses a TTM 57SL mixer, just connect the mixer and run through the driver updater as above.

WINDOWS TROUBLESHOOTING

If you have a USB PCI card, your computer may have allocated bandwidth to other devices, including your mouse, preventing Scratch Live from recognising the MP 4. Unplug unnecessary devices and install Scratch Live again. You may need to temporarily move your mouse to the built-in USB port. After installation, reconnect USB units as needed.

If other USB devices steal bandwidth, you may get a “interface disconnected” message when launching Scratch Live, try unplugging and re-plugging in the MP 4.

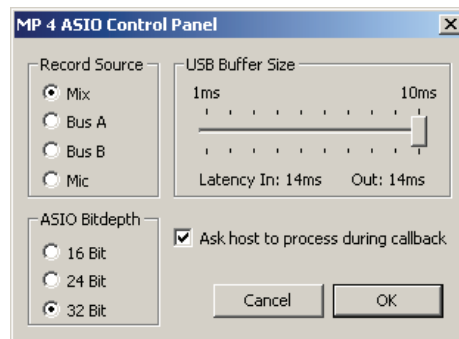
The ASIO Bit Depth and “Ask host to process during callback” settings should not be adjusted unless you are having problems.

Uncheck “Ask host to process during callback” if you have audio dropouts. Your application may not support an ASIO bitdepth of 32-bit. If this is the case, there will be no audio sent to the MP 4.

THIRD-PARTY SOFTWARE

The MP 4 can be used with third party software, as well as the Scratch Live software that comes with it. When you install Scratch Live, an ASIO driver will also be installed. You can use the MP 4 as a sound card for any third party software that supports the ASIO standard. Go to the audio interface control panel in the third party software, and choose the MP 4 Driver. Launch Control Panel to access more settings for the MP 4 ASIO driver.

You can reduce the USB Buffer Size for lower latency.



USING THE TOOL TIPS



Click on the ? icon to enable tool tips. Tool tips provide a handy way to learn the various features of Scratch Live. Move the mouse over a section of the screen to bring up a context-sensitive tool tip. Holding the mouse over the ? button with tool tips turned on will show you a list of all keyboard shortcuts. Tool tips are available in several languages. Scratch Live will display the tool tips in the language that your computer is set to. If your language is not available, the tool tips will be displayed in English.

IMPORTING AND PLAYING MUSIC

IMPORTING YOUR MUSIC

The easiest way to load music into your library is by using the files button:

1. Click on the files button to open the files panel. The left side of this window displays various locations on your computer hard drive (and external drives if you have one). Click on these locations to navigate your computer and find your music. By default, your music will usually be found in either "Music" (Mac) or "My Music" (Windows).

2. Once you have located your music, drag the folder or files you want to import onto the purple "All..." icon. This is located to the left of your screen at the top of the crates and playlist window. If you wish to import all of your music, just drag your whole music folder onto this icon.

TIP: You can also import by dragging files and folders directly from Windows Explorer (PC version) or Finder (Mac version) into the Scratch Live library.

SUPPORTED FILE TYPES

Scratch Live supports fixed and variable bit rate .MP3, Ogg Vorbis, AAC, .AIFF, .WAV and Whitelabel (wl.mp3) file types. M3U playlists are also supported.

NOTE: iTunes Music Store DRM files cannot be played back by Scratch Live. iTunes Plus files are DRM-free.

PLAYING MUSIC

Click on the **All...** icon to show all the tracks in your library. Use the keyboard shortcut Shift + Left Arrow to load the highlighted track on to the left deck, and Shift + Right Arrow to load the highlighted track on to the right deck.

TIP: You can also load tracks to decks using the mouse. Click and drag a track from the track list area on to either deck.

TRACK DISPLAY

When a track is loaded, the track name, artist and length are displayed in the track title bar, and the Virtual Deck shows a solid black line.

If the track has BPM or track information written in the tag this will also be displayed. **SEE "ANALYZING FILES" ON PAGE 12.**

WHITELABEL.NET

The Serato Whitelabel Delivery Network is a unique system that allows record labels to digitally deliver promotional releases directly to DJs.

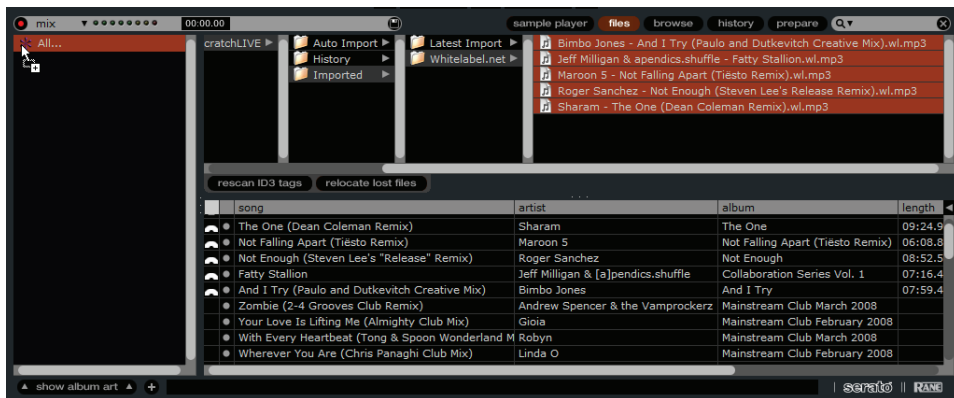
To download Whitelabel audio files and to sign up to receive updates on the latest promotional releases, visit www.whitelabel.net.

WHITELABEL AUDIO FILES

Whitelabel.net audio files are a unique format (file extension wl.mp3) developed by Serato. They are specially prepared for use in Scratch Live; pre-analyzed, tagged with song and artist info, BPM and album art where possible.

Whitelabel audio files play as high quality 320 kbps stereo audio in Scratch Live when Rane Scratch Live hardware is connected. Without Scratch Live hardware connected, or when playing these files through other mp3 software and devices, they will play as low quality 32 kbps mono audio.

Whitelabel audio files are promotional releases from records labels available to Scratch Live DJs for free from Whitelabel.net.



PREPARING YOUR FILES

ANALYZING FILES

Before you play your music in Scratch Live, it is important to first analyze your files.

The analyze files function processes the songs in your library to detect file corruption, saves the waveform overview to an ID3 tag*, and calculates auto-gain and BPM values.

HOW TO ANALYZE FILES

To analyze files start Scratch Live with the hardware disconnected. On the left side of the main screen, you will notice a button labeled “analyze files”. Click this to automatically build the overviews for all the tracks in your library.

TIP: You can drag and drop individual folders, crates or files onto this button to force the building of overviews at any time.

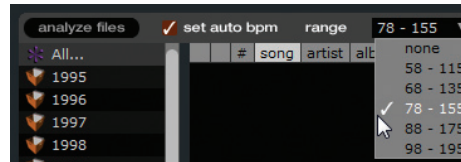
ABOUT CORRUPT FILES

If Scratch Live detects a corrupt file it will tag it with a corrupt file icon:



It is very important that you delete ANY corrupt files from your library as they can cause Scratch Live to crash regardless if you play the file or not. **SEE “STATUS ICONS” ON PAGE 23 AND “CORRUPT FILE DESCRIPTIONS AND DIAGNOSES” ON PAGE 29.**

SET AUTO-BPM

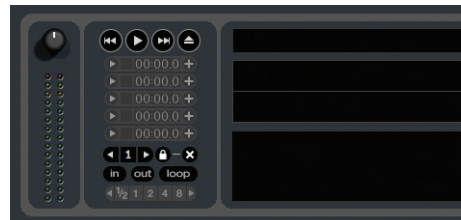


If this option is checked while analyzing files, Scratch Live will calculate the estimated tempos of your files. If Scratch Live is confident that the auto-BPM estimate for a file is accurate, it will be written to an ID3 tag* in the file. The auto-BPM function will not be applied if the track already contains BPM information. To re-analyze these files and use auto-BPM or auto gain on them, drag them onto the analyze files button. If you know your files BPM will fall within a certain range, use the range drop down to avoid double or half value BPMs being calculated.

***ID3 tags contain data about your tracks and are saved inside the files themselves. Genre, track name and artist are examples of common tag information. SEE “EDITING ID3 TAGS” ON PAGE 22.**

THE OFFLINE PLAYER

The offline player is available when Scratch Live hardware is not connected, and outputs through the current default audio device. Load a track to the offline player by dragging and dropping onto the deck, or pressing shift+left arrow. If the end of the loaded track is reached, the next track in the current playlist is played automatically.



The offline player is a useful tool for preparing crates, auditioning tracks, and setting cue and loop points.

FILE MANAGEMENT

Located in the files pane are two buttons, rescan ID3 tags, and relocate lost files. Use these tools for ongoing file and library management.



RESCAN ID3 TAGS

Click this button to force Scratch Live to re-read all file tags. Alternatively, you can drag and drop files, folders, or drives onto the rescan id3 tags button from the files pane. This will only scan the files that you drag and drop, resulting in much faster processing.

TIP: Rescanning the tags is a handy way to identify all the files that Scratch Live can't find (for example if the files have been altered or moved). These tracks will show up red in the main track list, with an exclamation mark in the status column. You can sort by the status column to group all these tracks together.

RELOCATE LOST FILES

This feature finds music and folders on your computer that you have either moved or altered.

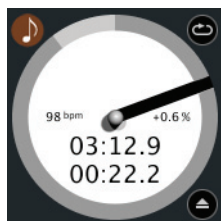
1. Clicking the relocate lost file button to search all your drives (internal and external) for files currently marked as not found in your library.
2. When this process is complete, your Scratch Live library will be updated with the new location of your files.

TIP: Drag and drop files, folders, or drives onto the relocate lost files button from the files pane. This is useful if you know the location of your files, as it only scans the drag and drop location, with faster relocation.

MAIN SCREEN OVERVIEW

VIRTUAL DECK

The Virtual Deck shows everything about the speed and position of a track. The circular progress bar around the edge is a visual representation of the



position within the song, and can be set to flash to warn you that the track is nearing its end. The time and remaining time are displayed in minutes and seconds. The pitched BPM (BPM with pitch adjustment multiplier added) is shown on the left of the Virtual Deck, and the percentage pitch shift is shown on the right of the Virtual Deck. If the track has no BPM information, pitched BPM will not be shown.

TIP: Use the keyboard shortcut shift-alt-arrow to unload a track from the Virtual Deck.

VISUAL AIDS

When the track is playing several waveforms are displayed. Each shows a different aspect of the track being played.

TEMPO MATCHING DISPLAY



The Tempo Matching display area provides a helpful tool for beat matching. Scratch Live detects the beats within the track, and places a row of orange peaks (for the track on the left side) above a row of blue peaks (for the track on the right side) in the Tempo Matching display

area. When the two tracks are matched to the same tempo, the peaks will line up. Note that the tempo display is aligned with the beginning of the bar, so the peaks keep their relative position as the track plays. This display does not show the relative timing of the beats, only the tempos of the tracks. The peaks will still line up when the tracks are playing at the same tempo, but are out of sync.

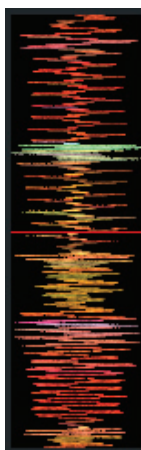
TRACK OVERVIEW DISPLAY

This view provides a complete overview of the track waveform, and includes a marker to show the current position within the track. This view is useful for finding transitions within the track. The waveform is colored according to the sound spectrum – red representing low frequency bass sounds, green representing mid frequency sounds and blue representing high frequency treble sounds.

You can jump to different positions within the track by clicking on the Track Overview display. Grey lines behind the overview show the length of the track – a thin grey line every minute, and a thick grey line every 5 minutes. The overview will be filled when you load the track onto a Virtual Deck. On slower computers, disable auto fill overviews in the setup screen – with this setting disabled, the overview will be filled as you play the track. **SEE “PREPARING YOUR FILES” ON PAGE 12.**

MAIN WAVEFORM DISPLAY

This view provides a close-up of the track, including color coding to show the frequency of the sound; red representing low frequency bass sounds, green representing mid-frequency sounds and blue representing high-frequency treble sounds. You can also switch to a three-band spectrum view by holding the ctrl key and clicking on the waveform. Click on the



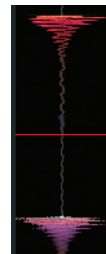
waveform to ‘scrub’ or make fine adjustments to your position within the track. The Main Waveform is zoomed around the current position in the track. **SEE “CUE POINTS” ON PAGE 16.**

TIP: Use the + and – keys to zoom in and out.

TIP: Waveform can be either vertical or horizontal.

SEE “HORIZONTAL WAVEFORMS” ON PAGE 27.

Kick Drum



In this example, the red part of the wave represents a kick drum, while the purple part represents a snare drum.

Snare Drum

BEAT MATCHING DISPLAY

This view shows the position of beats within the track. When beat matching, this view helps align the downbeats of the two tracks. The markers are matched up when the two tracks are beat matched.

Example: The following is a demonstration of using the visual aids to help beat match. In this example, the track that is playing is on the left deck, and the track to be mixed in is on the right deck.

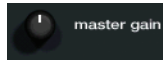
1. Start the track playing on the right deck. After a few seconds, blue peaks appear in the Tempo Matching display.

2. Adjust the pitch of the right turntable until the blue peaks sit under the orange peaks in the Tempo Matching display. Once they are aligned, the two tracks have the same tempo.

3. Next align the markers in the Beat Matching display. Watch the color of the items passing by in the Main Waveform display. Remember that a kick or bass drum will be red in color, and a snare drum will be green or blue. This technique will by no means guarantee perfect mixes, but may help to speed up the process of beat matching.

MASTER GAIN

The master output of Scratch Live can be controlled using the master gain control. This adjusts the output volume of all tracks played.



NOTE: For best results, set the master gain to the 12 o'clock position, and adjust the volume of individual tracks using the track gain adjustment.

TAP TEMPO

For tracks with no BPM information, there is a tap tempo button displayed where the BPM usually is, in the song info area. Pressing alt-space bar activates the tempo tapper (press alt-space bar a second time to activate the tempo tapper on the right Virtual Deck). Tap the space bar along with the beat. After you've tapped the first beat, you can switch to double time tapping, half time, start of each bar etc. The range is set by the first two taps, after that you can switch to any steady rhythm you feel comfortable with – quarter notes, half note, whole notes. Esc resets the BPM, Enter saves the BPM to the track. You can use the mouse if you prefer. Your controller's pitch slider doesn't need to be at zero, we do the math for you. You can also use the tempo tapper when no song is loaded, for finding the BPM of regular records, for example.



KEY LOCK

When Key Lock is on, the key or pitch of the song stays locked at what it would be if the track was playing at normal speed, regardless of the pitch slider setting or external controller platter speed. Key Lock has scratch detection, so that it automatically turns off when scratching for a natural scratching sound. Turn Key Lock on or off by pressing the button to the top right of the Virtual Deck.



TIP: F5 and F10 will turn Key Lock on and off for the left and right decks respectively.

REPEAT

Use the repeat function to repeat the entire song.



TIP: Short "loop" samples can be turned into a continuous track using the repeat function. The loops must be less than 10 seconds long, and cut at the start and end of a bar.

CENSOR

Use the censor button to 'mask' parts of a song, or use as a special effect. When you press the censor button, the track starts playing backwards from that point. When you release the censor button, the track plays forward from the point you would have been, had you not pressed the censor button.



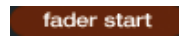
EJECT

This ejects the track playing or loaded track from the Virtual Deck.



FADER START

Playback may be triggered from the Crossfader. To start playback using the Crossfader, pause the track at the desired position and press the fader start button. Now each time you move the Crossfader from its end position, the track will start playing from that point. Moving the Crossfader from the right end point will start the left deck when fader start is turned on, and moving the Crossfader from the left end point will start the right deck when fader start is on. You can set the fader start point using the keyboard shortcut ctrl-i for the left deck, and ctrl-k for the right deck. You can also jump to this point without moving the fader by pressing i for the left deck, and k for the right deck. The fader start point is not saved with the file, and by default this point is set to the start of the track.



AUTOPLAY

Click the autoplay button to enable autoplay. With this setting turned on, when one track finishes playing, the next track starts automatically. Load from a crate to play through the songs in that crate, or from your library to play through your library.



Autoplay works in both rel and int modes. Play from start must be checked in the setup screen for autoplay to work correctly.

INPUT REVERSE

Swaps the Program A input with the Program B input of the MP 4. This transfers control over to the alternate Virtual Deck. For example, the controller for the right hand side now controls the left hand side Virtual Deck. This lets you mix using just one controller.



TRACK GAIN

Use the track gain adjustment to balance the volume of the tracks in your library. Any adjustment made to the gain of a track is saved with the file, and will be reapplied to the entire track when it is loaded again. The level meter shows the level sent to the hardware interface after both individual track gain and master gain adjustment. **SEE "USE AUTO GAIN" ON PAGE 26.**



USB DROPOUT INDICATOR

The USB dropout indicator on the main screen is a useful trouble shooting tool if you have problems with audio dropouts. Such dropouts are caused by an interruption in passing the audio to the Scratch Live hardware interface. If such an interruption (or dropout) occurs, a red light will appear briefly, just to the left of the Scratch Live logo at the top of the screen. The light will be red for one second, and then orange for four seconds.



If you do experience USB drop outs:

- Try closing other applications that are running at the same time as Scratch Live.
- Try turning off background tasks, for example, wireless networking.
- If your CPU load is very high, try decreasing the maximum screen updates. **SEE "MAXIMUM SCREEN UPDATES" ON PAGE 27.**

MIXING WITH THE MP 4

Scratch Live software has many features allowing you to smoothly mix two tracks together. From left to right, these are:

Previous track – Go to the previous track in the list.



Rewind - The rewind function speeds up the longer you press the button.



Play / pause reverse - Press to play, press again to stop playback. You can adjust the braking knob in the setup screen to range from an immediate stop to a slow turntable-style 'power down'.



Play / pause forward – Press to play, press again to stop playback. Uses the same braking as described above.



Fast forward – The fast forward function speeds up the longer you hold the button.



Next track – Jump to the next track in the list.



Bend down - Create a temporary decrease in the playback speed. Use bend down if the two tracks are in time, but this track is slightly ahead of the other track.



Bend up – Create a temporary increase in the playback speed. Use bend up if the two tracks are in time, but this track is slightly behind the other track.



PITCH SLIDER

Use the pitch slider to make pitch adjustments while using internal mode. Drag the pitch slider with the mouse to make large pitch movements, or hold the shift key and drag the pitch slider to make fine adjustments.



TEMPORARY CUE

There is a temporary cue point that can be used like the Cue button on many DJ CD players. Press ctrl-I to set this temporary cue point on the left deck, and ctrl-K to set it on the right deck. This temp cue point is shown in the main waveform as a white marker. This cue point is not saved with the track, and by default is set to the beginning of the track. Press I to jump to this temporary cue point on the left deck, and K for the right deck. If you hold down the I or K key while the track is stopped, it will play from the temp cue point. As soon as you release the key, it will jump back to the temp cue point. Note that you can use this shortcut to jump to the beginning of the track if the temporary cue point has not been set. **SEE “CUE POINTS” ON PAGE 16.**

SPEED RANGE

These buttons allow you to seed the base playback speed – 1/2 (half speed), 33/45 or the speed of a 45 RPM recording playing at 33 RPM, 1x or normal speed, 45/33 or the speed of a 33 RPM recording playing at 45 RPM, or 2x (double speed).



MORE CONTROLS

You can also control playback using the computer keyboard shortcuts — turn Caps Lock on to enable. **SEE “PLAYBACK KEYS USE SHIFT” ON PAGE 26.**

Left Deck	Function	Right Deck
Q	play / pause reverse	A
W	play / pause forward	S
E	pitch down	D
R	pitch up	F
T	bend down	G
Y	bend up	H
Alt-Q	load previous track	Alt-A
Alt-W	load next track	Alt-S
Alt-E	rewind	Alt-D
Alt-R	fast forward	Alt-F
Ctrl-I	set temporary cue point	Ctrl-K

Click on the waveform to 'scrub' or make fine adjustments to your position within the track. This may be useful if you wish to set cue points in your tracks, and don't have a controller connected.

CUE POINTS

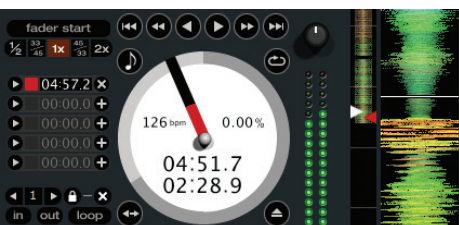
Use cue points in Scratch Live to mark and trigger different parts of your tracks. The cue point markers are saved with the file in the track's ID3 tag. This means they will be present each time you load the track.

SETTING CUE POINTS

You can set up to five cue points for each track. Click on the + button to place a cue point, or use the keyboard shortcuts below. A cue point will be set at the current playhead position of the track and can occupy any of the 5 slots.

Use the keyboard shortcuts: ctrl-comma (for left) and ctrl-period (for right) to place cue points in chronological order. Alternatively, use ctrl-1 through 0 to set a specific cue point, i.e., to set a cue point on the left deck in slot two, press ctrl-2.

Notice that the stripe on the Virtual Deck jumps to the 12 o'clock position and changes color when you set a cue point – you are at the cue point when the stripe is one solid color and at the 12 o'clock position. As the track plays on beyond the position of the cue point, the colored bar shortens by a fifth for each rotation. Likewise, as you approach the cue point, the color will grow by a fifth each rotation. For example, the picture below shows the track just before the end of the 5th rotation before the cue point.



TIP: Zoom in on the waveform using the – and + keys and 'scrub' to the desired position for greater accuracy when setting cue points.

ENABLE HOT CUES

To turn on hot cues, check “enable hot cues” in the playback tab on the setup screen. When hot cues are enabled, you can set cue points simply by pressing the number keys 1 through 0 (no ctrl modifier required). Note that you can only add cues this way if the cue point slots are empty.

SEE “ENABLE HOT CUES” ON PAGE 26.

TRIGGERING CUE POINTS

Click the arrow to the left of each cue point to jump to it. You can also jump to cue points using keyboard shortcuts – 1 through 5 for the cue points on the left deck, and 6 through 0 for the right deck cue points.

EDITING CUE POINTS

To remove a cue point, use the x button on the right side of the cue point panel. You can also over-write cue points by using the shortcut keys ctrl-1 through 0.

CUSTOMIZING CUE POINTS

The colors of cue points can be changed at any time. To change the color of a cue point, click on the colored square and choose a new color from the drop down menu.

You can also drag and drop cue points to change their order in the list. If you wish to have the cue points sorted chronologically, check “sort cues chronologically” in the playback tab on the setup screen. If you load the same track onto both decks, you will be able to add or modify cue points from either deck.

When you jump to a cue point in internal mode while paused, the track will play from the cue point for as long as the key or mouse button is pressed, after which the playhead returns to the cue point. If this is done using the keyboard while the track is playing in either internal or relative mode, the cue point will be repeatedly triggered, producing a stuttering effect.

LOOPING

You can save up to 9 loops per track; these loops are saved in the file, and will be present when you reload the track. To make a loop, set the in-point by clicking the in button, and the out-point by clicking the out button. To turn the loop on or off, click the loop button. If you want the playhead to jump to the start of the loop when you enable the loop, hold the control key and press the loop button.



To adjust the in-point of the loop, click the in button. You can use the arrow keys: left arrow to move the in-point towards the start of the track, right arrow to move the in-point towards the end of the track. Hold down the shift key while pressing the arrow key to make coarse adjustments. Click the in button again to save the in-point. The same applies to adjusting the out-point.

You can also use the control vinyl (or CD) to adjust the in- and out-point. Click the in button, then move the control vinyl. Moving the vinyl will adjust the in-point. Once you are happy with the new in-point, click the in button to save, and release the control vinyl.

The control vinyl will go back to controlling playback once the record is back up to normal speed. Using the control vinyl to adjust loop end points is optional – to turn this feature

off, disable the adjust loops with vinyl option in the setup screen. There are 9 available loop slots per track. If a loop is set in a given slot, the background (behind the loop number) will be green. Press the x button to clear the loop. If you click on the locked loop symbol, a red border will appear. This indicates the loop is locked, and you will not be able to adjust the end points or delete the loop until you unlock it, by clicking on the number again.

NOTE: Looping applies to rel and int modes.

AUTO LOOPING

Auto looping allows you to create loops instantly. If the track has a BPM value simply click the number of bars you wish to loop and Scratch Live will create the loop for you. The loop is snapped to the beats in the song detected by Scratch Live so even if you press the button slightly out of time Scratch Live will still create a perfect loop for you.

Five auto-loop buttons are available on screen at any one time. They range from 1/32 to 32 bars. The user can select the auto loop range with the ◀ and ▶ buttons.

Pressing an auto-loop button will create a loop start point from the nearest beat to the playhead (within reason), and set a loop endpoint in the future. Pressing auto-loop 1 while auto-loop 1 is active will deactivate the loop. Pressing a different auto-loop button while looping is active will extend the endpoint of the current loop to the appropriate new auto-loop length.

You can also save an auto-loop to the next available slot. When using an auto-loop, a save button is visible where the lock loop button normally is.

NOTE: Auto-looping requires the track BPM to be set. SEE “SET AUTO-BPM” ON PAGE 12.



THE A - SLOT

A special loop slot ‘A’ exists for auto-looping. The act of using the auto-loop buttons sets a loop in the ‘A’ slot, following the rules above. Turning a loop off using the auto-loop buttons returns you to the loop slot that you were previously in at the time you started auto-looping. Turning the loop off using the ‘loop’ button leaves you in the ‘A’ slot. The ‘A’ slot is not saved to disk automatically, pressing ‘save’ saves the loop to the first empty slot in 1-9.

Auto-looping shortcut keys are alt-1 to 5 for the left deck, and alt-6 to 0 for the right deck. They correspond to the looping buttons as laid out on screen. ie. if the onscreen buttons display 1 2 4 8 16 bar loops, alt-1 triggers 1 bar loop, and alt-5 triggers a 16 bar loop.

LOOP ROLL

Loop roll performs a standard auto-loop, but when the loop is turned off, the playback position is returned to the position where it would be if it had not entered the loop (much like censor).

The other difference between loop roll and standard autoloop is the ‘roll’ button is momentary. The loop is engaged when the button is pressed down, and disengaged when the button is released. Use short loop lengths to create “stutter” type effects.

To activate loop roll, hold control + alt while clicking on the desired autoloop increment, or use the **keyboard shortcuts**: control + alt + 1 through 5 for the left deck and control + alt + 6 through 0 for the right deck. (ie. the same as the autoloop controls with the additional ‘alt’ key as a modifier).

The range of values available for loop roll are 1/32 through to 32 bars. The shortcut keys will activate whichever loop lengths are visible on screen, i.e., if you have lengths of a 1/4 bar through to 4 bars visible for the left deck, control + alt + 1 will activate a 1/4 bar loop roll, control + alt + 2 will activate a 1/8 bar loop roll and so on.

Use the ◀ and ▶ buttons to toggle through the range of possible lengths visible on screen.

LOOP ROLL WITH MIDI

You can assign loop roll to MIDI in several ways: After pressing the MIDI assign button in Scratch Live, press the control + alt keys, click on an auto-loop value, then click on the button/slider you want it mapped to on your MIDI controller. Alternatively, you can assign the singular loop roll button to MIDI, then assign a MIDI knob or slider on your controller to the autoloop select knob (visible in the MIDI assign panel area when in MIDI assign mode) to change the values on the fly.

TIP: When you have the “Autoloop Select” knob assigned to MIDI, you have all of the loop roll lengths at your disposal. This allows you to roll up and down the loop length scale, to create interesting stutter and build-up effects.

NOTE: Like autoloop, loop roll requires a BPM value written to the ID3 tag in order to work. Build overviews with the “set auto-bpm” box checked and the proper range for your music selected to ensure an accurate BPM value.

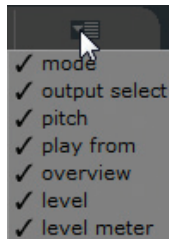
SP-6 SAMPLE PLAYER



The SP-6 Sample Player allows you to play up to six sources of audio, in addition to the tracks playing on the Virtual Decks. Any audio file in your Scratch Live library can be loaded to any one of the six slots, allowing playback of short samples, sound effects, or full length tracks.

The SP-6 is enabled when the MP 4 is plugged in, but not operational in the offline player mode.

Click on the sample player button to access the SP-6 window. In the top right corner of the SP-6 there is a button which opens the Display Menu. Clicking on this drops down a menu with the list of available controls:



- **Mode** - Chooses the play mode - Trigger / On-Off / Hold / Repeat modes.
- **Output Select** - Assigns individual slot outputs to the left, mix, right or to the master output selector.
- **Pitch** - Pitch Slider / Bend / Nudge / Keylock controls.
- **Play from** - Choose which cue point / loop to use for the loaded track.
- **Overview** - Displays the overview of each track.
- **Level** - Individual sample slot level and Gain controls.
- **Level meter** - Displays the volume level for the sample slot.

This enables you to set up the sample player with the appropriate controls that suit your workflow.

LOADING THE SP-6

To load a track to the SP-6, drag and drop the desired file from your library into one of the sample slots. To eject a track, click on the eject button to the right of the title display.

TIP: You can load tracks to the SP-6 with the keyboard shortcuts: ctrl + alt + z to n.

TIP: Select and drag six tracks from your library onto the first sample player slot to simultaneously load six tracks across all six slots.

PLAYING SAMPLES

Pressing the play button on each slot will play the loaded audio.

TIP: Use the shortcut keys

z (slot 1) x (slot 2) c (slot 3)
v (slot 4) b (slot 5) n (slot 6)


to trigger each sample respectively.


SP-6 INSTANT DOUBLES


You can instant double from the Virtual Decks down to the SP-6, from the SP-6 up to the Virtual Decks and also between the sample slots themselves. This means the position, track gain and speed will match when you drag a track to from one location into another. This allows you to beat match tracks with your turntables/CD players on the Virtual Decks, and then “instant double” the track down to a slot, freeing up the Virtual Decks to continue your mix with other tracks. Click and drag an already playing track from a Virtual Deck or sample slot and drop it on another sample slot to begin instant doubling.


SP-6 PLAY MODES

Each sample slot has three different play modes:

Trigger mode - When play is pressed,  the audio plays through until the end of the track. Pressing repetitively will trigger the audio from the beginning of the track. To stop the audio, hold the alt key while either clicking the play button, or pressing the corresponding shortcut key (e.g., alt - z for slot one).

Hold Mode - The sample will only play  while you press and hold the play button or the corresponding shortcut key. Upon release of the play button, the audio stops immediately. This mode most closely resembles the function of the “note off” mode found on many popular samplers.

On / Off Mode - When play is pressed,  the audio plays through until the end of the track. Pressing play again stops the audio.

Repeat Mode - Each slot has a repeat  button. When activated, this will repeat the loaded audio file from beginning to end, or will turn on the loop selected in the “play from” field.

TIP: Short “loop” samples can be turned into a continuous track using the repeat function. Ensure there is a clean cut at the start and end of a bar.

SP-6 PITCH CONTROLS

There are individual Pitch Slider, Bend, Nudge, and Keylock controls for each sample slot. The BPM is also displayed next to the pitch slider. If no BPM is present in the tracks ID3 tag, the pitch of the track is displayed as a percentage.

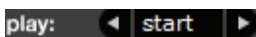


Click and drag the pitch slider to make regular pitch adjustments. Hold the shift key and move the pitch slider to make fine pitch adjustments.

Click on the + and - buttons to nudge the track into time. (temporary pitch adjustment) Hold the ctrl key and click on the + and - buttons to make ultra-fine pitch adjustments to nudge the track, adjusting the pitch permanently.

SP-6 'PLAY FROM' SELECTOR

Use the 'play from' selector to choose



where the track will play from. You can choose to play a track from the start of the file, any one of the cue points, or any one of the loop in points.

When this is set to play from start, or play from a cue point, the track will play right through until stopped. When a loop is selected, the track will play until the loop out point, unless you have "track repeat" on, in which case the track will loop using the in and out points of the selected loop.

The number of options will be dependent on the number of cue points and loops already set in your track. i.e if the track loaded has no cue points and loops set, then only "start" will be available as a "play from" option.

TIP: To set or adjust cue and loop information for a track, load it to a Virtual Deck, make your adjustments, then load it back into the sample slot.

SP-6 TRACK OVERVIEWS

Displays an overview of the track loaded to each sample slot. The waveform, play head position, cue points and selected loops will all be visible.



SP-6 SLOT VOLUMES

Each individual sample slot has a separate volume slider and gain control.



Volume Sliders - Use the volume slider to mix and make temporary adjustments to the volume of the sample you are playing. You can use these sliders like you use the line faders or up faders on your DJ mixer, fading from full volume right through to completely silent.

Gain Knobs - In addition to the volume slider there is an additional gain knob for each slot. These allow you to fine tune the maximum gain volume of the loaded sample. The gain adjustment will also be written to the track's ID3 tag, meaning that it will be the same everytime you load it.

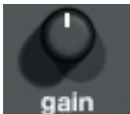
SP-6 OUTPUT

Use the output selector to choose where you wish to have the SP-6 output to.



- L** outputs through the left channel
- M** outputs through both channels (mix)
- R** outputs through the right channel

There is also a master sample player gain knob to adjust the overall SP-6 volume.



INDIVIDUAL OUTPUT SELECTORS

By default each sample slot will be set to Master, mirroring the SP-6 master output setting. You can however, use the individual output selector buttons to override the master output setting.



To send an individual slot to a different output from the master, deselect the master option by clicking on the master button for the corresponding slot.

This will unlink the sample slot from the master sample player output selection, allowing you to choose the L, M, R output for each slot.

These output routings will be saved when you close down Scratch Live, so the next time you launch Scratch Live, your preferred settings will remain the same.

SP-6 SAMPLE BANKS

The SP-6 has four separate sample banks, labeled A, B, C and D. To switch between the different banks click on the A, B, C or D buttons. Each bank will save the individual sample and sample slot settings you last used, allowing you to prepare banks for easy recall at a later stage. Sample Bank A will load as the default.



SP-6 MUTE BUTTONS

Use the mute buttons to mute the audio output for each of the SP-6's sample slots. Click on the mute button to mute the audio output, click the mute button again to turn the audio back on.



You can also ctrl-click on the mute buttons to mute the outputs momentarily, meaning that the audio will only be muted for as long as you hold your mouse click.

TIP: You can MIDI assign these buttons, allowing you to create a virtual kill switch for the sample slot. To MIDI assign momentary mute, hold ctrl and click on the mute button before tapping your MIDI controller.

SP-6 MIDI

All features of the SP-6 are MIDI assignable. The SP-6 window must be opened first before enabling MIDI assign mode. **SEE "MIDI CONTROL" ON PAGE 20.**

MIDI CONTROL

OVERVIEW

The MIDI Control feature in Scratch Live provides the ability to map MIDI controls to Scratch Live controls, and thus control the functions of Scratch Live using MIDI controllers such as keyboards, triggers, sliders, and knobs. Integrating MIDI controllers into your Scratch Live setup can improve live performance usability, such as hitting pads on a MIDI controller to trigger loops and cue points.

MIDI CONTROLLER SETUP

The process of setting up a MIDI controller for use with Scratch Live will vary depending on the hardware in question. Many devices can connect to a computer using MIDI over USB, and will either be supported directly by your operating system, or require installation of drivers and configuration utility software. Follow the manufacturers instructions for installation.

Other controllers may solely use a MIDI out connector to send control messages, and will require a separate MIDI interface unit to communicate to software. Generally the MIDI interface will come with drivers and configuration tools which pass your controllers output onto an available MIDI channel, which can be used by Scratch Live.

Once your controller is installed and functioning correctly, use the directions for assigning controls below.

ASSIGNING CONTROLS

To enable MIDI assign mode, click the MIDI button. Hovering the mouse pointer over a control will bring up the MIDI assignment box, showing the current assignment status.



To assign a MIDI control, click on the control in Scratch Live, then move the MIDI control. The MIDI assignment box should update to show it has mapped the controls to one- another.

To un-assign a MIDI control, click on the control in Scratch Live, and press return on your computer keyboard.

NOTE: Once in MIDI assign mode, Scratch Live controls will no longer respond directly to the mouse. If you need to change a control using the mouse, disable MIDI assign mode.

While in MIDI assign mode, controls which have MIDI inputs assigned show a green box indicator around them.

MIDI PLATTERS

The Scratch Live Virtual Decks are not user assignable to MIDI control. MIDI devices with platters on them all send different data so user mapping is not possible. To control the platter use a natively supported controller.

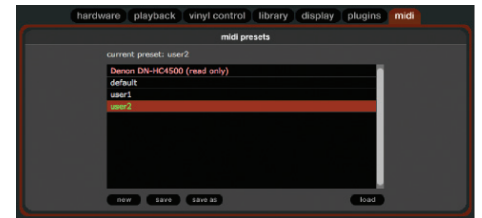
ASSIGNING MIDI TO OTHER CONTROLS

Controls which are not normally visible are available for assignment in the lower part of the screen when in MIDI assign mode. These include library navigation controls and the temporary cue points for either deck.

ASSIGNING CTRL-CLICK FUNCTIONALITY

Some Scratch Live controls on the GUI have additional functionality assigned to ctrl-click. You can assign ctrl-click functionality to a MIDI control, alongside the normal functionality. For example, ctrl-click on the internal mode pitch slider returns pitch to zero. To assign this to MIDI control, enter MIDI assign mode, ctrl-click on the slider, and then assign one of the pads to it. When you press the pad, pitch goes to 0.

PRESETS



MIDI presets are accessible in the MIDI panel of the setup screen. By default, the current MIDI assignments in Scratch Live are automatically remembered and loaded next time you start the program. The preset screen allows you to save and recall several different MIDI setups. This is useful if you are using several MIDI devices or want to quickly switch MIDI setups without having to reassign all your controls.

NATIVE CONTROLLER SUPPORT

This Scratch Live version currently has native support for the following 3rd party controllers:

- Denon DN-HC4500
- Denon DN-HD2500
- Denon DN-HC1000S
- Numark DMC2
- Numark iCDX
- Pioneer CDJ-400
- Pioneer MEP-7000 / SEP-C1

These controllers are plug and play, and can automatically control Scratch Live with no MIDI assignment necessary. Visit scratchlive.net for detailed documentation on how to use these controllers.

TECHNICAL INFORMATION

Scratch Live MIDI Control only supports:

- Note On/Off
- Standard 7-bit CC (Control Change)
- 14-bit CC
- RPN/NRPN (14-bit).

ORGANIZING YOUR MUSIC

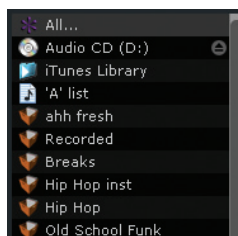
Scratch Live can support an unlimited number of tracks – the only limitation is the size of the hard drive of your computer. A number of features are included to help you to keep your music organized and find songs quickly and easily.

GROUPING TRACKS INTO CRATES

Scratch Live supports several ways of organizing and sorting your file library. iTunes™ users will notice that Scratch Live can incorporate your existing iTunes library and playlists.

Scratch Live uses digital “crates” for quick access to your favorite collections. There is no limit to the number of crates you can create, and any given track can be placed in multiple crates. For example, you could organize your files into the following crates, where any one track would be filed in more than one crate:

- Hip Hop
- UK Hip Hop
- French Hip Hop
- Inst Hip Hop
- Old Hip Hop
- Hip Hop LPs



To make a new crate, click the + button under the library window. To rename a crate, double click the crate name.

You can change the order of tracks within a crate by sorting by the “#” column and dragging them up or down.

TIP: Check the protect library option in the setup screen to prevent changes to your crates. If you do delete a crate by accident, you can get it back from the recycle bin / trash. Crate files have the extension .crate.

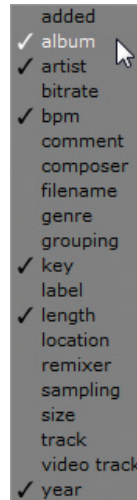
SUBCRATES

You can drag and drop crates into other crates to make subcrates. If you drag a crate to the very left of the crate panel, it will stay in the top level of the crate structure. If you drag the crate a little to the right, onto the name of another crate, it will make the crate you are dragging a sub crate of the first crate.

SORTING YOUR FILES

The track information display area can be customized to display the columns listed below:

- Added
- Album
- Artist
- Bitrate
- BPM
- Comment
- Composer
- Filename
- Genre
- Grouping
- Key
- Label
- Length
- Location
- Remixer
- Sampling
- Size
- Track
- Video Track
- Year



The column button ◀ is located at the top of the library pane in the right hand corner. Click on the column button to select which columns you want to display. To sort your library by a column, click the column header so it highlights. For example, clicking on the album column header will sort your library alphabetically by album title. To move a column, drag the header to the left or right. To resize a column, click on the column boundary and drag it to the left or right.

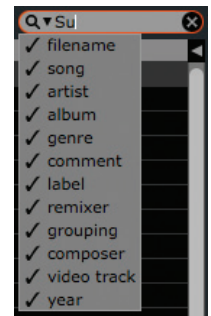
USING THE SONG BROWSER



The song browser allows you to filter your song list by Genre, BPM, Artist and Album. To turn the song browser on or off, click the browse button.

SEARCHING

Scratch Live includes a search function to help you find files quickly and easily. Enter text into the search box and Scratch Live will automatically find as you type. To select which fields the search function will look through, click on the left hand side of the search box. The drop down menu shows which fields are currently being used. Press esc or the x button on the right of the search box to clear the search.



TIP: Use the keyboard shortcut ‘ctrl-f’ to jump to the search box. This keyboard shortcut will also take you out of any crate or playlist that you might be in and into your main library, so you can find any track in your collection. If you then click on a crate or playlist, the search query will be cleared.

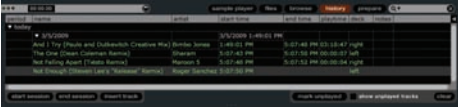
PREPARE WINDOW

The prepare window is a holding area for tracks, much like preparing a set by lifting records part way out of your record bag. You can drag tracks (or whole crates) from the main track list into the prepare window, or simply drag them onto the prepare button. These tracks will be removed from the prepare window once they have been played. All tracks in the prepare window will be discarded when you exit Scratch Live.

TIP: Use the keyboard shortcut ctrl-p to add tracks to the prepare window.

TIP: Select the contents of the prepare window and drag them onto the new crate button (+) to save your selection as a crate.

HISTORY



The history button opens a complete log of all the tracks you have played and allows exporting Scratch Live session information as a data file.

Each session is catalogued by date and time. Using the drop down arrow, you can navigate to and view detailed information of any previous sessions. There are columns for the period (i.e., date of session), name of track and artist name. In addition, these other categories listed below will give you more detailed information about your sessions:

Start Time - When viewing a song row, the start time of the song is displayed. When viewing a session row, the start time of the session is displayed with the date (in real time value).

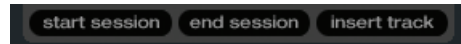
End Time - When viewing a song row, the end time of the song is displayed. When viewing a session row, the end time of the session is displayed with the date (in real time value).

Playtime - When viewing a song row, the total played time of the song is displayed (i.e., 00:03:00). When viewing a session row, the total elapsed time of the session is displayed with date (i.e., 10/09/08 01:38:16).

Deck - The Virtual Deck the song was played on will be displayed under the deck column. In the song row, either left or right is displayed. The offline player will be listed as offline.

Notes - Use this field to list particular information about your songs and each session (i.e., note how you transitioned from one track to another).

Start Session / End Session - To start or end a session, click the corresponding button.



Insert Track - If you wish to add information for tracks not played in Scratch Live into your session (e.g., if you played one of your favorite vinyl or cd), select the song you want to insert after and click the insert track button. Double click the inserted track fields and edit your information accordingly. (Note that when exporting an m3u playlist [see exporting below] “inserted tracks” will not be present.)

Export - You can export each session as a data file using the export button. Select a session, then choose your preferred file format, and click export. There are three possible export formats:

- **text** - to create a simple text file with your session information contained within.
- **csv** - to create a file for use in spreadsheet software.
- **m3u** - to create a playlist file, which can be imported into media players. Note that an m3u does not contain audio itself, it only points to the location of your audio files. (Inserted tracks within sessions will not be included in an m3u playlist.)

TIP: To make a new Scratch Live crate containing your session information, select a session and drag it to the + plus crate button. (This will automatically name the crate with the session date).

Listing Behavior - only the tracks you **actually** play are listed in history. This is done using an A-B algorithm, meaning a track on deck A is only listed once the track on deck B has been changed or ejected.

You can choose to show tracks which you have auditioned, but not actually played, by checking the show “unplayed tracks” box. The session will then also list these tracks in grey, along with actual played tracks.

Alternatively, you can mark or unmark tracks as played manually. Select a track (or a group of tracks) and click the mark played / mark unplayed button. This may be useful if you play a track off regular vinyl or CD - breaking the A-B algorithm).

Songs that you have played are marked as green in your library. Click on the button marked ‘clear’ to reset the list of recently played tracks and turn the color of your library back to white.

EDITING ID3 TAGS

Much of the information associated with each file can be edited from within Scratch Live. Double click on the attribute within the main library to edit the attribute. Filename, length, size, bit rate and sampling cannot be edited. This information is saved in the file itself. Note that the protect library option in setup must be unchecked to allow edits. **SEE “PREPARING YOUR FILES” ON PAGE 12.**

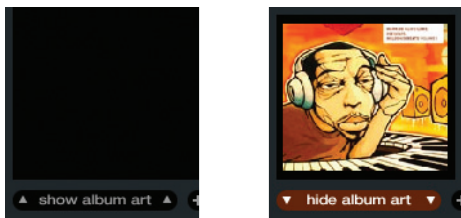
TIP: Use the keyboard shortcut ctrl-e to edit text. Hold down the ctrl key and move with the arrow keys to change to a different field while staying in edit mode. When you have more than one file selected, editing tags changes all the files in your selection.

TIP: The second column in the library is the label color for that file. Click it to bring up a color palette, and customize the Virtual Deck for that file.

LIBRARY ZOOM

You can change the size of your library text by using the shortcuts ctrl + and ctrl -.

DISPLAY ALBUM ART








MP3 files can contain album art information. Click on the show album art button at the very bottom left of the screen to open a small window. This window displays the album art of the track currently selected in the library.

Album art can also be shown next to the track information display on each Virtual Deck. Click on the display tab of the setup menu to find this option. **SEE “SHOW ALBUM ART ON DECK” ON PAGE 27.**

STATUS ICONS

The leftmost column shows the status of each track. The image to the left shows five tracks with differing statuses.

- Scratch Live has detected some corruption in the MP3 file. If possible, re-encode the MP3. 
- The track has been imported from the iTunes library. 
- The track has been imported from the iTunes library, and Scratch Live has detected some corruption in the MP3 file. Solution: If possible, re-encode the MP3. 
- The track cannot be found. Most likely the file has been renamed or moved. 
- Tracks that are read-only have a locked icon. 

MORE INFO ON CORRUPT FILES

If you have a corrupt file in your library, hover your mouse over the status icon for information on what type of corruption was found. **SEE “CORRUPT FILE DESCRIPTIONS AND DIAGNOSES” ON PAGE 29.**

SCRATCH LIVE BACKUP

Scratch Live stores your library database and crates information in the Scratch Live folder on your hard disk. This folder is created on a drive when files are added to Scratch Live. A copy of each Scratch Live folder called ScratchLIVEBackup is created next to the folder it is backing up. This folder is created when exiting Scratch Live. You will be prompted to backup your Scratch Live library on exit if there is no backup for a drive or if the last backup is more than 1 week old.

Backup will only keep ONE level backup at a time; each time backup runs it overwrites the previous backup.

Note: Make sure you back up your music separately. This backup function only backs up the Scratch Live folder, not your music files.

DELETING CRATES AND TRACKS

To delete tracks from your Scratch Live library, select the track and use the keyboard shortcut ctrl-delete. (Make sure you have the protect library option unchecked in the setup menu.)

- Deleting a track when you are in the All... playlist removes it from your library and any crates that the track may be in.
- Deleting a track inside a crate removes it from that crate but the file will remain in your All... playlist.
- Deleting a track from a subcrate will remove it from the subcrate and the main crate but not the All... playlist.
- Crates that are deleted are sent to the recycle bin/trash.

NOTE: To delete any files from your library and your hard drive (sending them to the recycle bin) use the shortcut ctrl-shift-delete.

If you are using iTunes playlists, your files cannot be deleted this way. You will need to delete them from within iTunes.

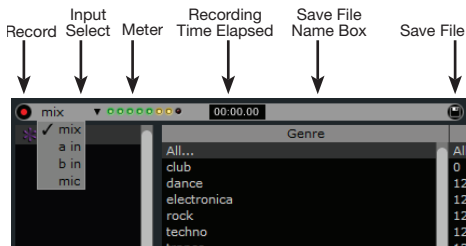
RECORDING

Scratch Live allows you to record one of six stereo signals from the MP 4:

- Mic
- Program A
- Program B
- Main Mix

1. Click on the downward arrow (icon) to get the drop menu displaying the six possible record sources.
2. Select the desired source and press the record icon to start recording.
3. The record icon flashes while recording and the display shows the elapsed recording time.
4. Press the record icon again to stop the recording.
5. To save the recording, type in a name for the recording and click the save icon.
6. The recording is automatically placed in a crate named “RECORDED”. If the crate does not already exist, it will be created automatically.
7. To start a new recording without saving, simply click the record button again.

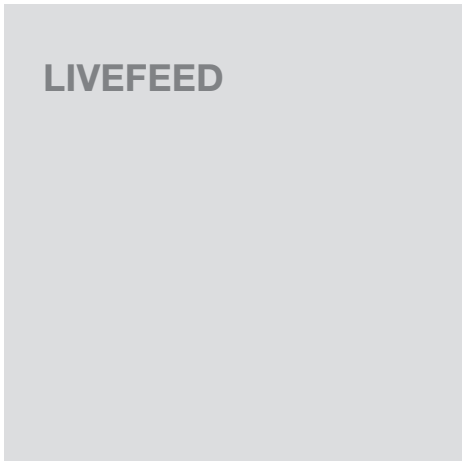
Recordings can be loaded onto the decks, renamed, and managed like other files. Recordings are saved in “MyDocuments\My-Music\ScratchLive\Recording” on a PC and “~/Music/ScratchLive/Recording Temp” on a Mac. Recordings are saved as 16-bit, 44.1 kHz stereo AIFF files.



TIPS:

- The keyboard shortcut ctrl-n turns recording on and off.
- You can load a recording without saving it using the short cut keys shift + left arrow to Virtual Deck 1 or shift + right arrow to Virtual Deck 2.
- If the Virtual Deck is set to **int** mode and is unloaded, the input record level is sent to the Virtual Deck's higher resolution stereo meters. E.g., if you're recording from input 2, set the right Virtual Deck to **int**, eject the track if there is one loaded, and the Virtual Deck's meters will show the signal coming into input 2.

NOTE: Recordings over 3 hours are automatically split into individual files.



LiveFeed allows you to stream any of the standard record sources (mic, program a, program b) to a Virtual Deck. You can then instantly play the recording back just like a normal audio file - you can scratch it, speed it up, slow it down, set loops and set cue points.

There are two recording options, normal and gated. The normal option means recording will begin as soon as the deck starts playing. The gated option means recording will only begin

once the input source exceeds the set gate level (thus avoiding periods of silence). You can set the gate level by clicking the dropdown menu in the LiveFeed filename. The lower the gain setting the more sensitive the gate is.

The amount of time available to record is determined by your audio cache setting. The track overview display shows the amount of usable audio you have to play with from the recording. Click anywhere in the track overview display to jump to your desired position in the recording. **SEE "AUDIO CACHE" ON PAGE 27.**

USING LIVEFEED

First locate the LiveFeed files in your library. Type "livefeed" into the search box and you will see: LiveFeed - Rane MP 4 Record Source
LiveFeed - Rane MP 4 Record Source (Gated).

Load the desired LiveFeed file to any deck. To begin recording, start the Virtual Deck playing. The waveforms will start to build in the track overview and main waveform display as the input source is being recorded, you can now use the recording as normal.



KEYBOARD SHORTCUTS

These actions can be accessed directly from the computer keyboard.

NOTE: Playback, cue and speed controls use Shift or Caps Lock. You can turn this off in the setup screen. SEE “PLAYBACK KEYS USE SHIFT” ON PAGE 26.

KEY	ACTION
ctrl - L	Locate the current track. This will highlight the track you most recently loaded. Pressing ctrl - L again will alternate between the tracks recently loaded on both decks.
ctrl - R	Reveal - the highlighted song is opened in a file browser.
ctrl - F	Find - moves the cursor to the search box.
ctrl - A	Select all.
ctrl - C	Copy text in edit mode.
ctrl - E	Edit text.
ctrl - V	Paste text in edit mode.
ctrl - X	Cut text in edit mode.
ctrl - Z	Undo last track load.
shift - ctrl - ↑ shift - ctrl - ↓	Move focus up / down through the library or crates. Note that if you have a song highlighted in the song view, and use shift - ctrl - ↑ ↓ you will move up or down through the library or crates. When you release the shift or ctrl key, the focus will go back to the song view so that you can move up and down through songs using ↑ ↓.
ctrl - P	Add tracks to the prepare window.
ctrl - N	Start a new mic recording.
ctrl - O	Open the track in your default MP3/WAV/OGG/AIF player.
- or +	Zoom the main waveform display.
ctrl - or +	Zoom the library text size.
tab	Alternate focus between crates or songs.
ctrl - del and ctrl - backspace	Remove track from library., remove track from crate, delete crate (does not delete the file).
alt - del and alt - backspace	Remove track from crate and from library.
ctrl - shift - del and ctrl - shift - backspace	Delete the file from your library <i>and</i> send to the recycle bin. (Note to iTunes users: files in your iTunes library cannot be deleted this way).
ctrl - shift - /	Toggle the input reverse switch
esc	Clear search string if searching, or exit Scratch Live.

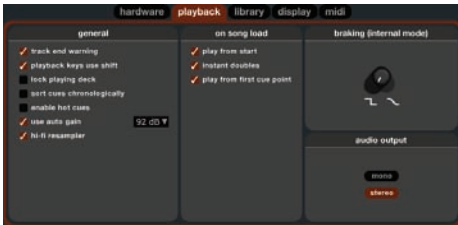
SAMPLE PLAYER	slot 1	slot 2	slot 3	slot 4	slot 5	slot 6
Load to sample slot	ctrl - alt - Z	ctrl - alt - X	ctrl - alt - C	ctrl - alt - V	ctrl - alt - B	ctrl - alt - N
Play sample slot	Z	X	C	V	B	N

LEFT DECK	ACTION	RIGHT DECK
ctrl - ← or shift - ←	Load the highlighted song to a deck.	ctrl - → or shift - →
ctrl - shift - →	Load the track currently on one deck onto the other deck as well.	ctrl - shift - ←
shift - alt - ←	Unload the track from a deck.	shift - alt - →
ctrl - , (comma)	Place a cue point.	ctrl - . (period)
ctrl - 1, 2, 3, 4, 5	Place a cue point in a slot.	ctrl - 6, 7, 8, 9, 0
1, 2, 3, 4, 5	Jump to cue points in track.	6, 7, 8, 9, 0
F5	Key lock on / off.	F10
Q	Play / pause reverse.	A
W	Play / pause forward.	S
E	Pitch down.	D
R	Pitch up.	F
T	Bend down.	G
Y	Bend up.	H
U	Censor.	J
I	Go to temporary cue point.	K
O	Set / adjust loop in-point.	L
P	Set / adjust loop out-point.	;
[Loop on / off.	'
ctrl - [Jump to selected loop.	ctrl - '
alt - Q	Load previous track.	alt - A
alt - W	Load next track.	alt - S
alt - 1, 2, 3, 4, 5	Auto loop on / off.	alt - 6, 7, 8, 9, 0
ctrl - alt - 1, 2, 3, 4, 5	Loop roll.	ctrl - alt - 6, 7, 8, 9, 0
alt - E	Rewind.	alt - D
alt - R	Fast forward.	alt - F
alt - O	Previous loop.	alt - P
alt - L	Next loop.	alt - ;
alt - space bar	Activate the tempo tapper.	alt - space bar (x2)
ctrl - I	Set temporary cue point.	ctrl - K

ADDITIONAL SETUP

This section covers general preferences and adjustments you can make to improve the performance of Scratch Live. From the main screen, click on setup to get to this area.

PLAYBACK



TRACK END WARNING

Enable track end warning to flash the Virtual Deck as you approach the end of the track. The label will start flashing 20 seconds from the end of the record. The track end warning does not apply to any tracks under 1 minute long.

PLAYBACK KEYS USE SHIFT

This is checked by default. Unchecking this option will enable all of these keys without pressing shift or having caps lock on. This applies to all cue points (1...0) and cue controls (QWERTY etc). **SEE “KEYBOARD SHORTCUTS” ON PAGE 25.**

LOCK PLAYING DECK

Every DJ's nightmare used to be lifting the needle off the wrong turntable in the middle of a set. This setting helps to avoid the digital equivalent;

loading a new track to the wrong deck. When this option is checked, you can only load a track if the target deck is stopped.

SORT CUES CHRONOLOGICALLY

The five cue points can be placed in any order, and can be dragged up and down if you wish to reorder them. If you prefer to lock them to chronological order, turn this option on.

ENABLE HOT CUES

When hot cues are enabled, you can set cue points simply by pressing the number keys 1 through 0 (no ctrl modifier required). Note that you can only add cues this way if the cue point slots are empty. **SEE “CUE POINTS” ON PAGE 16.**

USE AUTO GAIN

Auto gain enables you to set a uniform volume level for the tracks in your library. When a track is in auto gain mode, the track gain knob appears depressed.

To enable auto gain, check the “use auto gain” box under the playback tab. Provided you have analyzed your files, your tracks will now be loaded with the auto gain applied.

Next to the “use auto gain” check box is a drop down menu, in which you set the target gain volume level.

To find the optimum setting, load a track with an average volume level onto one of the Virtual Decks. Now play the track, and take note of the volume and LED lights inside the software.

The idea is for the track volume to be sitting just under the clipping point (indicated by the LED meter red-lining). If the track is too quiet, unload it, then go to the playback setup screen and boost the auto gain dB value more.

Once you've made this adjustment, load the same track onto the Virtual Deck again. You'll notice that the volume knob has automatically adjusted itself.

Keep making adjustments on the same track until it's just below the clipping point. Once this is set you won't need to adjust the target gain level ever again.

Because the track you used had an average volume level, most of the other tracks in your

library should be around the same volume. You may still need to make minor adjustments to some individual tracks, but once that's done these will stay saved in the ID3 tag of the file.

TIP: Slightly too quiet is always better than too loud. If your LED meter is in the red, it is likely that it is clipping. Not only does clipping not sound very nice, it can damage your equipment.

NOTE: Your overviews need to be built by version 1.7.2 or later for auto gain to work.

HI-FI RESAMPLER

This significantly reduces digital distortion at very slow or very fast record speeds, increasing the CPU load slightly. This option is off by default, the old resampler is used when switched off.

PLAY FROM START

If this setting is not enabled, freshly loaded tracks will continue to play from the point the last track was at. This option is on by default.

INSTANT DOUBLES

This allows you to quickly match the playhead position of two tracks. With this option set, when you load a track on one Virtual Deck that is already loaded on the other Virtual Deck (it must be the same file), the playhead will jump to the position of the track that was loaded first, with the keylock state and looping settings copied. This setting overrides the play from start and play from first cue point options.

PLAY FROM FIRST CUE POINT

Enable this option to start all tracks from the first cue point. This setting overrides the play from start option.

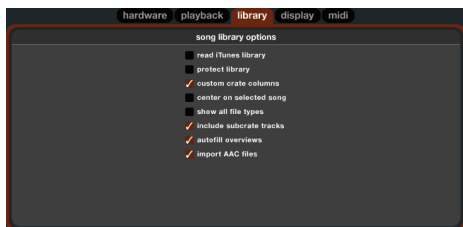
BRAKING

This controls how fast the deck stops when play is stopped. Counter-clockwise, the stop is immediate. Clockwise rotation increases the stop from a finger grab all the way to a slow turntable power-down.

AUDIO OUTPUT

By default the output of Scratch Live is stereo. You can also select mono output. This setting is saved when you exit Scratch Live.

LIBRARY



READ ITUNES™ LIBRARY

Check the “read iTunes library” option to show your iTunes library and playlists in Scratch Live. You can collapse your iTunes playlists by clicking on the blue folder icon.

Uncheck “read iTunes library” to remove iTunes playlists and iTunes songs from your Scratchlive library.

To add your iTunes music to your Scratch Live library permanently, drag and drop tracks from the iTunes playlists onto the word “All” (on the far left hand side of the Scratch Live screen), or into individual Scratch Live crates.

Any files moved to “All”, an existing crate, or a new crate will now remain in Scratch Live even when “read iTunes library” option is unchecked. Once a file has been permanently added to Scratch Live, the iTunes logo will disappear.

We recommend unchecking this option after you have added your music into the Scratchlive library.

NOTES:

- If your iTunes library contains a large number of tracks it may take some time for Scratch Live to read it.
- Any changes made in Scratch Live to the file information of tracks in your iTunes library will not appear in iTunes until after you play the track.
- Scratch Live cannot play files that have been protected by Digital Rights Management systems, such as those previously sold

through the Apple iTunes Music Store. iTunes Plus files are DRM-free.

- iTunes is available for Mac and PC.
- For more information about iTunes, visit www.apple.com.

PROTECT LIBRARY

Uncheck this setting to remove files and crates from your library. Enable to lock your library and prevent accidental file or crate deletion while using Scratch Live. Enabling this setting will also lock all file tags and crate names, so that no text can be changed.

CUSTOM CRATE COLUMNS

Check this option to set custom column views for each crate and playlist. When the option is off (default), all crates will share the same column configuration as the ‘All...’ crate.

CENTER ON SELECTED SONG

With this option on, scrolling up and down in your library holds the selected track in the middle of the library panel.

SHOW ALL FILE TYPES

Enable this option to show all files when importing tracks into Scratch Live. If this option is not selected, only files that Scratch Live can play will be displayed.

INCLUDE SUBCRATE TRACKS

You can drag crates into other crates to make subcrates. If you have the “include subcrate tracks” option turned on, any crate will also display the contents of all its subcrates. **SEE “ORGANIZING YOUR MUSIC” ON PAGE 21.**

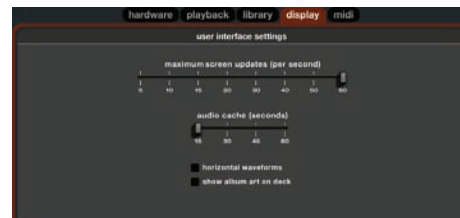
AUTOFILL OVERVIEWS

Enable this setting to automatically generate the track overview as soon as a track is loaded. If this setting is not enabled, the track overview will be generated as the track plays. Automatically generating the track overview uses more of the computer’s CPU power, and should be disabled on slower computers. Analyze your files before you play to pre-build all your overviews. **SEE “PREPARING YOUR FILES” ON PAGE 10.**

IMPORT AAC FILES

Turn this option off if you do not wish to import AAC files into your library. Changing this option will cause your iTunes library to be reloaded if you have the ‘read iTunes library’ option turned on.

DISPLAY



MAXIMUM SCREEN UPDATES

This feature allows you to throttle back the screen refresh rate. Users with slower computers might like to do this if they are having performance issues. It could also be useful if you want to limit Scratch Live’s processor usage, for example if you are running a recording program at the same time. The default setting is 60 Hz, or refreshed 60 times per second. This setting applies to the entire screen (i.e. the Virtual Decks, the waveforms, the library, and the setup screen).

AUDIO CACHE

Use the slider to set the amount of audio that is loaded into memory. A small audio cache will place less load on your computer, and the tracks will load faster. A large audio cache will give you a bigger view of the waveform when the main waveform view is zoomed out.

HORIZONTAL WAVEFORMS

Check this option to display the main waveform view horizontally. The waveform will expand to fill available screen space. If you are using a widescreen computer, increase the audio cache size to make the waveform bigger.

SHOW ALBUM ART ON DECK

Check this option to show the album art for your songs next to the track information display on each Virtual Deck.

TROUBLESHOOTING AND FREQUENTLY ASKED QUESTIONS

THE FIRST TIME I PLAY A NEW TRACK, IT TAKES A WHILE TO LOAD

Scratch Live has to read the entire file and create a file index the first time it is loaded. This may take a few seconds for longer files. After the first load, it should load instantly. **SEE “PREPARING YOUR FILES” ON PAGE 12.**

I HAVE A PARTICULAR MP3 THAT WON'T PLAY / PLAYS BADLY / TAKES A LONG TIME TO LOAD / CRASHES THE PROGRAM. WHAT SHOULD I DO?

The file may be damaged, and may need to be deleted from your library. Please go to the forum at scratchlive.net and notify the support team that you have a bad file. By reporting damaged or corrupt files, you will help the developers to improve Scratch Live's ability to play damaged MP3 files in the future.

I WANT TO BACKUP MY LIBRARY AND CRATES OR MOVE THEM TO ANOTHER MACHINE, SO WHERE ARE THEY STORED?

Your database and crates are stored in the folder Home\Music\ScratchLive on a Mac, and My Documents\My Music\ScratchLive on a PC. Crates have the file extension .crate and are located in your subcrates folder. If your library contains tracks that are stored on a drive other than your boot drive, a folder called _ScratchLive_ will be created in the root of that drive, and a separate database will be made in this folder. If it is a removable drive, the tracks will only appear in your library when the drive is connected. **SEE “SCRATCH LIVE BACKUP” ON PAGE 23.**

NOTE: To keep up with the latest tips, visit the Official Scratch Live Forum at scratchlive.net.

FADER CLEANING

With heavy use in harsh environments, the fader may need lubrication. This treatment extends longevity and can make a used fader as good as new. The fader assembly must be removed from the MP 4 for proper cleaning. We recommend any of the following cleaning solutions:

- **Caig DeoxIT FaderLube F100 spray lubricant**
- **Caig DeoxIT FaderLube F5 spray cleaner**
- **CRC 2-26** (www.crcindustries.com)

Order CaiLube MCL® from:
CAIG Laboratories, Inc.
12200 Thatcher Ct.
Poway, CA 92064
Phone: 858-486-8388
Fax: 858-486-8398
Web: www.caig.com

CLEANING INSTRUCTIONS

A. Fader assembly replacement (part #11646)

1. Unplug the MP 4.
2. Remove the bottom cover.
3. Remove the fader screws from the front panel.
4. Draw fader assembly out through the bottom.
5. Remove ribbon cable from old fader.
6. Attach ribbon cable to new fader.
7. Screw onto front panel
8. Replace bottom cover.

B. Fader cleaning

1. Hold the fader assembly away from the mixer.
2. Position the fader at mid-travel.
3. Spray cleaner/lubricant into both ends of the fader in sufficient amounts to flush debris.
4. Move the fader over its full travel back and forth a few times.
5. Shake excess fluid from the fader assembly.
6. Wipe off excess fluid.

CORRUPT FILE DESCRIPTIONS AND DIAGNOSES

Corrupt file: This MP3 contains invalid frames.	This MP3 contains frames which do not conform strictly to the official MP3 specification. Scratch Live can not be certain that this file will play back 100% accurately.
Corrupt file: This file contains corrupt frames that may result in audible glitches.	This file contains two or more contiguous corrupt frames. Since corrupt frames are replaced with silence, this could result in what might sound like an audio glitch.
Corrupt file: This file has been split. You should check the beginning for audio glitches.	The first MPEG audio frame in this file refers to audio that should be present before it but is not. This is usually the result of incorrect MP3 editing. Since a corrupt frame is replaced with silence and most songs start with silence, the resulting silence might not be noticeable. All the same, listen to the beginning of the song, just to be sure.
Corrupt file: This MP3 contains frames with corrupt data.	Decoding of an MPEG audio frame failed. This means that the frame contained invalid data. As usual with corrupt frames, this frame will be played as silence.
Corrupt file: This MP3 lost synchronization between the frame index and the frames.	Scratch Live is reading an old overview of an MP3 that has been edited in a 3rd party editing program. Re-building the overviews for the affected files usually corrects this error.
Corrupt file: This MP3 is completely invalid and is not playable.	Self explanatory. Possible causes are disk bad sectors, file system corruption, wrong file types, wrong file extensions, etc
Corrupt file: This file contains invalid audio data.	Scratch Live encountered a lot of invalid data while looking for audio in this file. This message alerts you to the fact that the file you're trying to play contains corrupt data. This may, or may not, affect playback.
Corrupt file: This MP3 contains no valid frames.	No audio could be found in this file, which means it is completely unplayable as far as Scratch Live is concerned. Please make sure this really is an audio file.
Unsupported file: This MP3 contains multiple layers.	While scanning this file, Scratch Live found frames belonging to multiple MPEG layers. Scratch Live does not support MP3s that contain frames from multiple layers – some frames may be output as silence.
Unsupported file: This file is more than 2GB in size.	Self explanatory. At the moment, Scratch Live does not support files that are 2GB in size (or larger).
Unsupported file: This file has data blocks greater than 2GB in size.	This file contains chunks of data that are larger than 2GB. Scratch Live does not support files that are more than 2GB in size.
Corrupt file: This WAV contains no valid chunks.	This WAV file contains no recognizable WAV data. It is quite possible that this might not be a WAV file.
Unsupported file: This file's data is not in PCM format.	WAV files can contain data in several formats. Scratch Live only supports WAV files that contain data in the PCM format.
Unsupported file: This file has a sampling rate greater than 96 kHz.	Scratch Live does not support sampling rates greater than 96 kHz. If you see this message, the simplest approach is to re-sample the audio at 96 kHz and re-save the file.
Unsupported file: This file uses more than 24 bits per sample	Scratch Live supports a maximum of 24 bits per sample of audio data.
Corrupt file: This WAV is incomplete.	Scratch Live expected more data in the file, but found none. This could be because the file was incorrectly truncated or because the data in the file is corrupt, causing Scratch Live to incorrectly estimate the amount of data present in the file.
Corrupt file: This file contains corrupt blocks.	This file contains blocks of data that report their size to be zero. This message was inserted to identify files that might cause lockups on previous versions of Scratch Live.
Corrupt file: This song contains no audio data.	Scratch Live could not find any audio in this file. Please check to make sure this file contains audio in a format that Scratch Live supports.
Corrupt file: This song contains invalid samples.	This file contains samples of audio that are too small to represent accurately and will therefore be truncated to zero. This should not result in any audible audio artifacts, but could cause audio dropouts on earlier versions of Scratch Live.

DECLARATION OF CONFORMITY

**APPLICATION OF
COUNCIL DIRECTIVE:**

2006/95/EC
2004/108/EC
2002/96/EC
2002/95/EC

**STANDARD(S) TO WHICH
CONFORMITY IS DECLARED:**

EN60065:Ed. 7.1 (2005)
EN55103-1:1996
EN55103-2:1996
ENVIRONMENT E2
SERIAL NUMBERS 600000-700000

MANUFACTURER:

Rane Corporation
10802 47th Avenue West
Mukilteo WA 98275-5098 USA

This equipment has been tested and found to be in compliance with all applicable standards and regulations applying to the Electromagnetic Compatibility (EMC) directive, 89/336/EEC. In order for the customer to maintain compliance with this regulation, high quality shielded cable must be used for interconnection to other equipment. Modification of the equipment, other than that expressly outlined by the manufacturer, is not allowed under this directive. The user of this equipment shall accept full responsibility for compliance with the EMC directive in the event that the equipment is modified without written consent of the manufacturer.

TYPE OF EQUIPMENT:

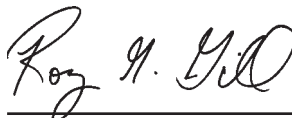
Professional Audio Signal Processing

MODEL: MP 4

Immunity Results: THD+N re:4dBu,400Hz sine, BW=20-20 kHz, Baseline: -65 dBr

Test Description	Measurement	Conditions
RF Electromagnetic Fields Immunity		
80 MHz -1000 MHz, 1 kHz AM, 80% depth, 3V/m	-65dBr	80 MHz - 350 MHz
	-46dBr	350 MHz - 650 MHz
	-57dBr	650 MHz - 1000 MHz
Conducted RF Disturbances Immunity		
150 kHz - 80 MHz, 1 kHz AM, 80% depth, 3V rms	-65dBr	Power Lines, 150 kHz - 6.3 MHz
	-50dBr	Power Lines, 6.3 MHz - 11.5 MHz
	-60dBr	Power Lines, 11.5 MHz - 18.5 MHz
	-65dBr	Power Lines, 18.5 MHz - 80 MHz
	-65dBr	Signal and Control Lines, 150 kHz - 80 MHz
Magnetic Fields Immunity		
50Hz - 10kHz, 4.0 - 0.4 A/m	-65dBr	50 Hz - 10 kHz

I, the undersigned, hereby declare that the equipment specified above conforms to the Directive(s) and Standard(s) shown above.



 (Signature)

Roy G. Gill

 (Full Name)

Compliance Engineer

 (Position)

April 26, 2005

 (Date)

Mukilteo WA USA

 (Place)

FACTORY AUTHORIZED SERVICE

Your unit may someday need to be serviced by the Rane Factory if you live in the USA. International customers should contact your dealer or distributor for service. You must call the Rane factory before shipping. Please do not return your unit to Rane without prior authorization.

Rane Corporation

To obtain service or a Return Authorization in the USA, please phone 425-355-6000

or Fax 425-347-7757

LIMITED U.S.A. WARRANTY

RANE CORPORATION WARRANTS ALL RANE PRODUCTS (EXCEPT THOSE ITEMS CLASSIFIED AS WEAR PARTS, AND LISTED ON THE MANUAL-1 PAGE OF EACH OPERATORS MANUAL) PURCHASED IN THE U.S. AGAINST DEFECTS IN MATERIAL OR WORKMANSHIP FOR A PERIOD OF TWO (2) YEARS. WEAR PARTS ARE LIMITED TO A PERIOD OF NINETY (90) DAYS FROM THE INITIAL DATE OF RETAIL PURCHASE FROM AN AUTHORIZED RANE DEALER—WEAR PARTS REQUIRE PROOF OF PURCHASE DATE. This limited warranty extends to all purchasers or owners of the product during the warranty period beginning with the original retail purchase. Rane Corporation does not, however, warrant its products against any and all defects: 1) arising out of material or workmanship not provided or furnished by Rane, or 2) resulting from abnormal use of the product or use in violation of instructions, or 3) in products repaired or serviced by other than the Rane Factory, or 4) in products with removed or defaced serial numbers, or 5) in components or parts or products expressly warranted by another manufacturer. Rane agrees to supply all parts and labor to repair or replace defects covered by this limited warranty with parts or products of original or improved design, at its option in each respect, if the defective product is shipped prior to the end of the warranty period to the Rane Factory in the original packaging or a replacement supplied by Rane, with all transportation costs and full insurance paid each way by the purchaser or owner.

LIMITED WARRANTY OUTSIDE THE U.S.A.

RANE PRODUCTS ARE WARRANTED ONLY IN THE COUNTRY WHERE PURCHASED, THROUGH THE AUTHORIZED RANE DISTRIBUTOR IN THAT COUNTRY, AGAINST DEFECTS IN MATERIAL OR WORKMANSHIP, THE SPECIFIC PERIOD OF THIS LIMITED WARRANTY SHALL BE THAT WHICH IS DESCRIBED TO THE ORIGINAL RETAIL PURCHASER BY THE AUTHORIZED RANE DEALER OR DISTRIBUTOR AT THE TIME OF PURCHASE. Rane Corporation does not, however, warrant its products against any and all defects: 1) arising out of materials or workmanship not provided or furnished by Rane, or 2) resulting from abnormal use of the product or use in violation of instructions, or 3) in products repaired or serviced by other than authorized Rane repair facilities, or 4) in products with removed or defaced serial numbers, or 5) in components or parts or products expressly warranted by another manufacturer. Rane agrees, through the applicable authorized distributor, to repair or replace defects covered by this limited warranty with parts or products of original or improved design, at its option in each respect, if the defective product is shipped prior to the end of the warranty period to the designated authorized Rane warranty repair facility in the country where purchased, or to the Rane factory in the U.S., in the original packaging or a replacement supplied by Rane, with all transportation costs and full insurance paid each way by the purchaser or owner.

ALL REMEDIES AND THE MEASURE OF DAMAGES ARE LIMITED TO THE ABOVE SERVICES, IT IS POSSIBLE THAT ECONOMIC LOSS OR INJURY TO PERSON OR PROPERTY MAY RESULT FROM THE FAILURE OF THE PRODUCT; HOWEVER, EVEN IF RANE HAS BEEN ADVISED OF THIS POSSIBILITY, THIS LIMITED WARRANTY DOES NOT COVER ANY SUCH CONSEQUENTIAL OR INCIDENTAL DAMAGES. SOME STATES OR COUNTRIES DO NOT ALLOW THE LIMITATIONS OR EXCLUSION OF INCIDENTAL OR CONSEQUENTIAL DAMAGES, SO THE ABOVE LIMITATION MAY NOT APPLY TO YOU.

ANY AND ALL WARRANTIES, EXPRESS OR IMPLIED, ARISING BY LAW, COURSE OF DEALING, COURSE OF PERFORMANCE, USAGE OF TRADE, OR OTHERWISE, INCLUDING BUT NOT LIMITED TO IMPLIED WARRANTIES OF MERCHANTABILITY AND FITNESS FOR A PARTICULAR PURPOSE, ARE LIMITED TO A PERIOD OF TWO (2) YEARS FROM EITHER THE DATE OF ORIGINAL RETAIL PURCHASE OR, IN THE EVENT NO PROOF OF PURCHASE DATE IS AVAILABLE, THE DATE OF MANUFACTURE, SOME STATES OR COUNTRIES DO NOT ALLOW LIMITATIONS ON HOW LONG AN IMPLIED WARRANTY LASTS, SO THE ABOVE LIMITATIONS MAY NOT APPLY TO YOU. THIS LIMITED WARRANTY GIVES YOU SPECIFIC LEGAL RIGHTS, AND YOU MAY ALSO HAVE OTHER RIGHTS WHICH VARY FROM STATE TO STATE, COUNTRY TO COUNTRY.

WARRANTY PROCEDURE - VALID IN U.S.A. ONLY

NOTICE! You must complete and return the warranty card or register your product online to extend the Warranty from 2 years to 3 years!

TO VALIDATE YOUR EXTENDED WARRANTY: Use the postcard that came in the box with your unit, or go to www.rane.com and click on **New Product Registration**. Fill out the warranty completely, being sure to include the model and serial number of the unit since this is how warranties are tracked. If your Rane product was purchased in the U.S.A., mail the completed card or register online with to Rane Corporation within 10 days from the date of purchase. **If you purchased the product outside the U.S.A. you must file your warranty registration with the Rane Distributor in that country.** It is advised that you keep your bill of sale as proof of purchase, should any difficulties arise concerning the registration of the warranty card. **NOTICE: IT IS NOT NECESSARY TO REGISTER IN ORDER TO RECEIVE RANE CORPORATION'S STANDARD TWO YEAR LIMITED WARRANTY.**

WARRANTY REGISTRATION is made and tracked by MODEL AND SERIAL NUMBERS ONLY, not by the purchaser's or owner's name. Therefore any warranty correspondence or inquires **MUST** include the model and serial number of the product in question. Be sure to fill in the model and serial number in the space provided below and keep this in a safe place for future reference.

WARRANTY SERVICE MUST BE PERFORMED ONLY BY AN AUTHORIZED RANE SERVICE FACILITY LOCATED IN THE COUNTRY WHERE THE UNIT WAS PURCHASED, OR (if product was purchased in the U.S.) AT THE RANE FACTORY IN THE U.S.. If the product is being sent to Rane for repair, please call the factory for a Return Authorization number. We recommend advance notice be given to the repair facility to avoid possible needless shipment in case the problem can be solved over the phone. UNAUTHORIZED SERVICE PERFORMED ON ANY RANE PRODUCT WILL VOID ITS EXISTING FACTORY WARRANTY.

FACTORY SERVICE: If you wish your Rane product to be serviced at the factory, it must be shipped FULLY INSURED, IN THE ORIGINAL PACKING OR EQUIVALENT. This warranty will NOT cover repairs on products damaged through improper packaging. If possible, avoid sending products through the mail. Be sure to include in the package:

1. Complete return street shipping address (P.O. Box numbers are NOT acceptable).
2. A detailed description of any problems experienced, including the make and model numbers of any other system equipment.
3. Remote power supply, if applicable.

Repaired products purchased in the U.S. will be returned prepaid freight via the same method they were sent to Rane. Products purchased in the U.S., but sent to the factory from outside the U.S. **MUST** include return freight funds, and the sender is fully responsible for all customs procedures, duties, tariffs and deposits.

IN ORDER TO QUALIFY FOR RANE'S ONE YEAR EXTENDED WARRANTY (FOR A TOTAL OF 3 YEARS PARTS AND LABOR), THE WARRANTY MUST BE COMPLETELY FILLED OUT AND SENT TO US IMMEDIATELY. VALID IN USA ONLY.

WE RECOMMEND YOU WRITE YOUR SERIAL NUMBER HERE IN YOUR OWNERS MANUAL AND ON YOUR SALES RECEIPT FOR YOUR RECORDS.

SERIAL NUMBER: _____ PURCHASE DATE: _____